



## WWII memorial board to be dedicated on Remembrance Sunday

A new memorial board honouring the men of the villages of Kirkburton and Highburton who gave their lives in the Second World War is to be unveiled and dedicated at the annual Remembrance Sunday service on 14 November to be led by Rev Stephanie Hunter in the Memorial Garden next to All Hallows Church

The memorial board which has been conceived and delivered by Burton Environment Group (BEG) includes images of the 22 men from our villages who made the ultimate sacrifice in the war against tyranny.

The WWII memorial board echoes the one to

the 67 men of our villages who fell in WWI which was dedicated in 2018 on the centenary of the end of WWI. The idea for a board to commemorate the fallen of WWII was suggested by some of relatives of servicemen who lost their lives in the second conflict.

The images of the soldiers, sailors and airmen have been found through painstaking research by BEG members who have scoured the county archives, regimental records and old editions of newspapers.

This research has brought to life powerful personal stories about these brave young men and their families.



The memorial board ready to be unveiled on Remembrance Sunday



The memorial board team in Kirkburton Memorial Garden

The memorial board, which is mounted on a frame constructed in Corten steel, was designed and erected by local firm Mindlabs Media.

Preparation of the site and landscaping and laying the stonework was carried out over many weeks by volunteers from Burton Environment Group (BEG) involving participants in the Duke of Edinburgh Award Scheme.

The project received financial support from Kirkburton Parish Council while Kirklees Council, Kirkburton History Group, local schools and the Kirkburton Uniformed Groups have also been involved.

As a community we give thanks to all the men named on this Memorial Board. May we never forget the sacrifices they made.



# Burton Bulletin

The Burton Bulletin is edited and distributed by volunteers to over 2,500 households in the Pennine villages of Kirkburton and Highburton, near Huddersfield.

c/o Kirkburton & Highburton  
Community Association

Burton Village Hall

Northfield Lane

Highburton

HD8 0QT

01484-606065

Web site: [www.KHCA.org.uk](http://www.KHCA.org.uk)

find us on **facebook**

Gerard Hetherington

Dave Hilton

Jan Moscovitch

Lesley Rattigan

Pat Shaw

Email:

[burtonbulletin@khca.org.uk](mailto:burtonbulletin@khca.org.uk)

Tel 01484 600488

## Advertising

Dave Hilton 602241

## Distribution

John Boden

and his huge team of dedicated  
helpers delivering to your door.

## Printing

Printed by

Print2020

[www.print2020.co.uk](http://www.print2020.co.uk)

## Contents

1	WWII Memorial Board
2	Contents
3	The View From The Bulletin In Praise of Burton
4	Theft of Lead from Village Hall Roof
5	Vandalism at Gregory Fields
6	Santa's Sleigh
7	Patient Participation Group
8	Burton Environment Group — Community Field
9	First School Business Diary
10	The Food We Waste
11	Letter on Plastics Plant a Tree
12	Visit of Brian Hill to Kirkburton
13	Featured Business — The White Swan
14	All Hallows Church
15	Heritage Day and Adopt a Grave
16	Frank Hill
17	Frank Hill
18	Kirkburton Middle School
19	Advertisement
20	MP's Report
21	Letters
22	Kirkburton History Group
23	Bluebell Garden Club
24	Kirkburton Pre-School
25	Music Matters
26	Stars and Cars —Martin Ward
27	Village Sketchbook
28	Kirkwood
29	Burton Belles WI
30	Burton Crafters HD8 Choir
31	Time Together—the Denby Dale Centre
32	Sports Reports
33	Sports Reports
34	Eating Out with the Burton Diner
35	Book Review Recipe
36	Highburton Playgroup
37	Advertisement
38	Puzzle Page
39	Just For Fun
40	Contact list Puzzle Answers

Enjoy reading the  
Bulletin?

Why not get in-  
volved in produc-  
ing future editions?

Contact:

Gerard

Hetherington 600488

or

Pat Shaw 605318

## Burton Bulletin

Deadline for next  
edition

Friday 14 January

For issue number 26

February 2022

Why not advertise  
your business in  
The Bulletin?

Copies of each edi-  
tion are hand-  
delivered to 2,500  
homes in Kirkbur-  
ton and Highbur-  
ton.

Our rates start at  
£25 for a box, up to  
£100 for a full page.

Contact Dave  
Hilton on 602241

# The View from the Bulletin

We live in difficult and sometimes worrying times. The coronavirus has sadly not yet been conquered. Despite progress with vaccination, the number of new cases and hospital admissions are rising alarmingly.

Problems with supply chain issues and skill

shortages are widespread.

Locally, this edition contains troubling news about theft of lead from the roof of the Village Hall and vandalism at the Gregory football fields.

Against this backdrop we were delighted to receive a letter from a reader which sings the praises of Kirk-

burton and Highburton. We are very pleased to produce the letter in full below.

The letter reminds us that whatever may be going on around us, the villages of Kirkburton and Highburton remain great places to live and work and to raise a family.

We wish all our readers a Happy Christmas and a peaceful New Year.

**The Bulletin Editorial Team**

## In praise of Burton

Dear Burton Bulletin,

As a 'comer in' of over 55 years, and after a lock down, I realise how much Kirkburton Village means to me.

The kindness shown by so many in a lifetime of good and sad times is immeasurable. Our village shop community, doing their best for you, is heart warming. From delivering dry cleaning, garden supplies, amazing floristry the general geniality in our co-op and help in finding goods. The cafes, allowing us to treat ourselves and enjoy a meet up with friends. The Hospice Shop raising funds for the people in our community who need our support. You, the community, supplying the shop, with amazingly good clothing, awesome bric-a-brac and fun items for both young and old and the best of management and volunteers.

Our local butcher who recently shared the joy of his marriage with the village. To realise that you had known him when he was a young man, first coming into the village butcher's shop, to him now being a married man and stalwart of fund raising, whether it is the local Royal British Legion and any fundraising missions in the village, he is your man.

We can wake up with the peace so many must yearn for. How lucky I feel for my-

self and my family.

Today, listening to the news and the offer of more money to raise doctors and surgery profiles met with a groan.

We basically need more doctors and staff to care for us and man our Health Centres. Our doctors need time to qualify, they are only people, people who have families and the same day to day problems that most of us have. The only difference is that they can also make us feel better with good advice and suggestions and treatment plans that can change lives for the better. After a recent fall and a reluctance to 'bother' them I got an appointment, after a telephone consultation, was asked to visit them the next day. After a check up, whilst also using their listening skills. with care and kindness, I was prescribed medication, further tests and now am feeling much better. Checks still ahead but feeling safe in their care.

It doesn't seem that long ago when we were praising all in the NHS for their tireless dedication and care to keeping us safe whilst putting themselves at great risk. Now we find that we are impatient if we cannot get through to the surgery because we are feeling poorly, or anxious for a member of our family or a friend. The announcement that you may be anywhere from 6th to 24th in line is met with dis-

may when you phone for an appointment. I also wonder how our receptionists must feel when they know how many people are waiting for that glimmer of hope when you are eventually through. They also have the expectation of anger for the long wait that people have endured with the rising anxiety of watching people looking worse, while they wait to get through. All this time the same staff are dealing with our problems whilst they too must be so tired. They get a huge thank you from me.

On a personal note, only this week I was able to thank a doctor who I had not seen at the surgery for over 6 years, for the great care he had shown to my husband over 6 years ago. At that time my husband was dying from pancreatic cancer, on that day we had intended to go to Dorset for what was to probably be a final family holiday with our son and daughter-in-law and young grandson. That morning my husband felt too ill to travel, a visit to the doctor who decided: '*we can get you there*'. With the doctor's advice, a loving daughter and granddaughter's driving skills, we made it. A truly memorable time.

Surrounding us we have trees changing colour, our fields settled with the farmers using their skills to keep our fields green and pro-

ductive. Our well-kept church yards, a special place to go and reflect on good times, on people we have known, loved and lost. Meeting with friends on trips to the shops or just out for a walk in our special areas in the village. Saying hello to anyone in passing, all special to our village or is it just us.

Always there is an event that stops us in our tracks and makes us observe if all around is safe. A recent burglary on one of our most senior and vulnerable people left us appalled that anyone could disturb and attempt to rob such an unassuming, kindly person, who with a key pad, should have been safe. How easy it is to break glass and enter. In our kinder community we need to be observant for anyone who could be vulnerable and maybe just check.

In the lifetime in Kirkburton making friends meeting new neighbours, making new friends, caring about your old friends, it has been a journey I've been proud to take. Thank you Kirkburton for having me.

My thanks,

**A Loyal Burtoner**

(name and address supplied)



# Theft of lead from the roof of our Village Hall



Evidence of the damage done to the roof of the Village Hall

We have been targeted twice, in the last three months, by criminals who are out to steal lead from our roof.

The first occurrence happened on Wednesday 7 July at 00:30, when two thieves stole some lead. We have digital CCTV cameras and were able to send photos of the thieves and their car to the police.

We did post a message on Facebook to highlight the

theft, however the police asked us to remove it as it would hamper their inquiries. As yet, no one has been charged.

The cost of repairs came to £1,250, the lead stolen would have been worth a fraction of this amount. However it is also the time and effort in ensuring the repair work was carried out as soon as possible, as well as all the administrative work that goes with this type of crime.

The second time occurred on Saturday 18 September at 00:27, however it was not until the big downpour of rain on 27 September that we realised that we had a problem.

We checked our cameras and it appears that the same two men had returned. This time the damage was worse as they not only tried to rip off any remaining lead (which was minimal) but they also ripped off the non-lead material which had been used to replace the lead after the original theft.

During the downpour that followed the front corridor at the hall was like a waterfall and the carpet tiles were saturated. Luckily, the rain inside the corridor was not sufficient enough to cause prolonged damage so further cost of repair was avoided.

We are aware that these thieves were not opportunists as they parked their car on Moor Lane and walked around to the hall and they wore gloves and brought their own ladder to gain access to the roof.

They also put mud on the back door camera on both occasions, but not until after showing their faces, so it was too late to stop us seeing them and forwarding their photos to the police.

After discussion with the police and the Community Association, it was decided to print the photo captured on CCTV in this paper.

Meanwhile, we have taken several steps to help make future potential thieves think twice about climbing onto our roof.



CCTV photo of one of the suspected thieves

IF YOU CAN HELP TO IDENTIFY THIS MAN, PLEASE DO NOT APPROACH THEM OR POST ANYTHING ON SOCIAL MEDIA BUT CONTACT THE POLICE BY RINGING 101, WEBCHAT OR EMAIL.

The two crime reference numbers are 13210345904 and 13210492274.



**N.T. SYSTEMS**

Security, Fire, CCTV & Access  
Installation Engineers

**0800 783 6999**  
[www.ntsistemas.co.uk](http://www.ntsistemas.co.uk)

**SPECIALIST IN SECURITY**



CCTV



INTRUDER



ACCESS



GATES



FIRE

We are a NSI Gold Accredited Company with  
over thirty years in the Industry.

Burton House, North Road, Kirkburton, Huddersfield HD8 0RL










# Vandalism at Gregory Fields Football Ground



Vandalism has caused up to £12,000 worth of damage at the ground of Kirkburton Football Club. Over the weekend of 18 and 19 September, vandals destroyed the whole of the perimeter fence and caused damage to the goalposts (pictured). Someone's 'fun' will have a severe financial impact on the club.

Significant damage to the playing fields was also caused in 2019.

The chair of Kirkburton AFC said – *“As a club which folded a few years ago, and restarted in the bottom division, we are now in a strong position in terms of players, and having success on the field since our restart’.* He went on to say *‘the damage is definitely something that cannot be repaired instantly by the club with the funds we have. It will certainly take many fund-raising events to raise enough money for repairs.’*

Unfortunately, on the night of 13 October there was **further vandalism** to the perimeter fence. Volunteers had secured the section last week, and overnight strong, heavy posts had been pulled out of the ground, needing

substantial force, causing the fence to be brought down again. The volunteers are getting frustrated and angered by this vandalism and would welcome any help and suggestions from Bulletin readers.

A few local residents have made donations which the club is thankful for, and a **GoFundMe** page has been set up to try to raise funds to repair the damage.

<https://www.gofundme.com/f/kirkburton-afc-maintenance-and-repairs>

The club are also appealing for anyone to come forward if they have any information about the vandalism, in the hope that the culprits may be brought to justice.





## Order now for Christmas!

Providing Highburton, Kirkburton and the surrounding areas with quality grass fed, home grown beef and pork from the Holmfirth hills.

Beat the queues and uncertainty by pre-ordering your Christmas centrepiece!

We are delighted to be able to offer you our amazing beef and pork joints, cut to your requirements, along with all the trimmings.

## BURTON PORK

### BURTON BEEF

**BEEF JOINTS - Price per KG**

- Rolled Sirloin £25.00
- 2 or 3 Rib of Beef £17.50
- Silverside £15.00
- Topside £15.00
- Top Rump £15.00
- Salmon Cut £15.00
- Brisket £12.00

**PORK & GAMMON JOINTS - Price per KG**

- Pork Shoulder Joint (2KG) £15.00
- Pork Leg Joint £7.50
- Rolled Pork Loin Joint £9.00
- Gammon Joint £9.00

**ALL THE TRIMMINGS!!**

- 2lb Pork Stand Pie £10.00
- 1lb Pork Stand Pie £5.00
- 12 (400g) Pigs In Blankets £5.00
- 20 (450g) Chipolatas £5.00
- 570g Apricot and Cranberry Stuffing £5.00

All pre-orders will be ready for collection on Saturday 18th December - we will be in contact before this date with collection details.

ALL OUR OTHER BEEF CUTS ARE AVAILABLE TO PRE-ORDER - PLEASE SEE OUR WEBSITE

[www.burtonbeef.co.uk](http://www.burtonbeef.co.uk) for further details and to order.

To pre-order, contact us on 07919 441123, email us on [burtonbeef@gmail.com](mailto:burtonbeef@gmail.com) or visit our website - [www.burtonbeef.co.uk](http://www.burtonbeef.co.uk).

Stuck for a gift? Gift Vouchers also available for any amount plus our popular beef selection boxes - 5kg £65.00 - 10kg £120.00

All items are subject to availability and weights are approx. We do try to keep a stock of frozen meat at all times. All meat is vacuum packed (except pies, sausages and burgers) and fresh frozen.





# SANTA'S SLEIGH

Great news. Santa has been in touch to say that he will be in Highburton and Kirkburton from 16 to 19 December and has notified us of the provisional route. Please watch social media for any changes or updates

As last year, Santa's helpers will not be knocking on doors, but will have collection buckets for donations for our local pre, and first schools. The money raised is always well received and much needed and appreciated.

Every evening there will be a 'Chief Elf' who will be responsible, along with all the other Elf helpers for everyone's safety and well-being.

Santa is so looking forward to visiting our villages, just a few days before Christmas.

Santa realises that it is a busy week, and many parents, and children may be out the evening he visits your street. So, you can always go and find him, in his sleigh, another evening, in another area of our villages. He will be happy to see you.

## Thursday 16 December

Leaving the lay-by beside the Health Centre at 5:30

Shelley Lane  
Fairfield Drive  
Queensway  
Low Town  
Riley Lane  
Riley Park (both sides of the road works)  
North Road (some shops and businesses will be open)  
Northwood Park  
Slant Gate (finish at The Smith's Car Park)

## Friday 17 December

Leaving Junction of Hall Lane and Highfield Road at 5:30

Hall Lane  
Far Dene, down and back up  
Towngate  
Burton Acres Lane  
Birkhead Close  
Grenoside View  
Burton Acres Way  
Burton Acres Mews  
Moor Lane  
Cotswold Mews  
Woodland Meadows



## Saturday 18 December

Leaving junction of Hall Lane and Highfield Road at 5:30

Highfield Road  
Burton Acres Lane  
Southfield Court  
Oakland Court  
Elm Court  
Sycamore Court  
Ashford Court  
Foxglove Drive  
Primrose Drive  
Dene Park

## Sunday 19 December

Meet at Kirkburton Church 5:40pm (before Carol Singing in Church grounds)  
Leave Church at 6:10pm

Turnshaws Road  
The Junction  
Paddock Road  
The Crescent  
Turnshaws Road  
Turnshaws Avenue  
Burton Acres Lane  
Hallas  
Gregory Drive  
Little Hallas  
Thorncliffe

## RUSS PARKINSON

VILLAGE BUTCHER SINCE 1982    TEL 01484 606812

NOW TAKING ORDERS FOR CHRISTMAS FOR ALL YOUR FRESH MEATS, TURKEYS, CHICKEN, DUCK, GOOSE, GUINEA FOWL, TURKEY BREAST AND A SELECTION OF PORK PIES.

A NON-RETURNABLE DEPOSIT WILL BE REQUIRED ON ALL ORDERS

### OPENING HOURS

MON, TUES, THURS, FRIDAY

7.30am until 5.00pm

SATURDAY 7.30am until 12.30pm

CLOSED ALL DAY WEDNESDAY

NOW SELLING A SELECTION OF PRODUCTS FROM THE

"BOLSTER MOOR RANGE"

INCLUDING POTTED MEAT, MUSHY PEAS, GRAVY, PORK SCRATCHINGS AND SCOTCH EGGS

NB: any item from the "Bolster Moor Range" can be pre ordered

## MANOR MILL COTTAGE

### Bed & Breakfast

Pam & David Askham

21, Linfit Lane, Kirkburton, HD8 0TY

d.askham@btinternet.com

www.manormillcottage.co.uk

07710192812

*local, welcoming and friendly accommodation*





## KIRKBURTON HEALTH CENTRE

### EXTRACT FROM PATIENT PARTICIPATION GROUP (PPG) NEWSLETTER

#### AUTUMN 2021

We are taking small steps to resume more face-to-face appointments. When visiting the practice, please continue to wear a face covering unless exempt and follow social distancing rules.

#### FLU VACCINATIONS

More people are likely to get flu this winter. Flu vaccine is given free on the NHS to people who:

- Are 50 and over (including those who will be 50 by 31 March 2022)
- Have certain medical conditions
- Are pregnant
- Are in long stay residential care
- Receive a carer's allowance or are the main carer for an older or disabled person
- Live with someone who is more likely to get infections
- Are frontline health or social care workers

#### WELLBEING BUS

Our Primary Care Network, **The Mast**, has organised a Health Inequalities project. Our **Wellbeing Bus** will be on the road from 12 October for six weeks, visiting localities across the Primary Care Network area. Sites will include Scissett Baths, Emley Farm Shop, Dobbies Garden Centre and Lepton Highlanders. The project is aimed at people who do not visit their doctor or nurse very often, and regard themselves as fit and well.

Nurses from across The Mast Primary Care Network and Kirklees Council colleagues will be on board to offer blood pressure checks and promote health and wellbeing. Information will be available on our Facebook Page, website [www.kirkburtonhealthcentre.nhs.uk](http://www.kirkburtonhealthcentre.nhs.uk)

#### FIRST CONTACT PRACTITIONER (FCP) SERVICE

We are delighted to introduce our First Contact Practitioner (FCP) service. This is a new development across **The Mast** Primary Network for patients with musculoskeletal (MSK) [bone, joint or muscle pain]. A FCP is an experienced physiotherapist who has the advanced skills necessary to assess, diagnose and recommend appropriate treatment or referral for MSK problems on a patient's first contact with their GP Practice. Physiotherapists **Rebecca** and **Katerina** will work within our surgeries at Kirkburton, Shepley and Skelmanthorpe offering face-to-face physiotherapy appointments, or a remote consultation if preferred. The FCP service gives patients immediate access to physiotherapy without being referred by a GP. Our patients will have quicker access to diagnosis, treatment and management of their condition."

Face-to-face appointments are available with **Rebecca** on **Mondays** at Skelmanthorpe, **Wednesdays** at Kirkbur-

ton, **Thursdays** at Shepley. A remote service is provided by **Katerina** on Tuesdays and Fridays for patients who prefer this option. Contact Reception for more information or to book an appointment.

#### COVID-19 BOOSTERS (THIRD DOSE)

Phase three of the national vaccination programme is now underway. The programme will be rolled out to the same priority groups as previously. This means that care home residents, people aged 50 years or over, frontline health and social care

workers those aged 16-49 with underlying conditions which put them at higher risk of severe COVID-19, adult carers and adult household contacts of immunosuppressed people, will be prioritised.

If you are eligible for a booster vaccine you will be contacted and invited to make an appointment. Please do not contact the Practice. Be reassured that we will contact you.

The booster must be given six months after a second vaccination dose.

### Social Prescribing

Social Prescribing connects people to a range of activities, services and events in your local community.

Learn how Social Prescribing can help you to do the following things:

- improve how you feel in a way that suits you
- have more control over your own health and well-being
- connect you to a local group or activity
- provide information or guidance about local resources and services

Many things can affect our health and wellbeing which could include feeling isolated, lonely or stressed by work, money and housing problems or living with a health condition.

A Link Worker will listen to what matters to you and put you in touch with people and activities that might help you to feel better.

*"Hello, my name is Ann Sweeney. I am the Social Prescribing Link Worker for the MAST Primary Care Network which covers Kirkburton Health Centre.*

*Social Prescribing is for everyone and can help improve your wellbeing by connecting you to a range of activities, services and events in your community.*

*You can make an appointment with me by contacting the surgery 01484 602040."*





# Burton Environment Group

## Moon Pennies and Eggs and Bacon available in the Community Field



BEG – Burton Environment Group volunteers have been very busy over the summer, carefully maintaining the many sites we look after around the villages. The biodiversity sub-group worked hard to extend the wildflower sites within the Community Field and have created six small areas to focus on. These areas have had the existing grass cropped extremely short and yellow rattle seeds have been sown to reduce its growth in the coming season. Introducing yellow rattle gives the wildflowers we've planted a better chance to establish themselves by weakening the existing grass as it is parasitic and draws nutrients from the grass roots. As most wildflowers prefer poorer quality soil, all the grass cuttings had to be raked and removed to avoid adding extra nutrients to the soil – a very sweaty job for all involved.

Our volunteers have grown hundreds of plants from seed and have nurtured them until ready to plant out in their new home. We planted out almost 500 seedlings in one afternoon alone and look forward to

watching their progress. There will be a final mowing of all of these areas before winter, which again will involve much raking and removal of clippings - if you'd like to join in with this "green gym" work you'd be very welcome.

One flower we planted earlier this year was **Field Scabious** and we were thrilled to see it in flower and being visited by bees which was exactly the intention of this group as it is such a valuable source of nectar for both bees and moths. Birds such as finches and linnets also love its seeds. It has a rough and hairy stem, some think similar to scabby skin and was used in days gone by to treat skin conditions such as scabies, mange, and itches as well as plague sores. In Belgium, it was an old custom for girls to pick scabious "buttons" or buds, give them all names of boys they liked and then choose to marry the boy represented by the flower that grew strongest. Common names for the flower are lady's pincushion, pins and needles, curly doddie and bachelors' buttons.

Another successful planting this year was of **ox eye daisy**, visible on ground



near the exercise stations. These large flowers are so bright that they appear to glow in the evening light and have gained the common name moon daisy or moon pennies. The flowers are loved by many pollinators including bees, butterflies and hoverflies. At one time in Austria and Germany the flowers were dried and hung in homes to repel lightning. We have recently planted over a hundred seedlings so keep your fingers crossed for a great display next year.

A much smaller, rambling flower we've planted is the

**bird's-foot-trefoil** which is a member of the pea family. It has some intriguing alternative names such as butter and eggs, hens and chickens and eggs and bacon which all refer to the egg yolk yellow flowers and the red blushed buds. Another name which conjures up less pleasant images is "granny's toenails" which refers to its claw-like seed pods. The appearance of these seed pods leads to the bird's foot part of its name. The leaves have five narrow oval leaflets and the lower two of these are bent back by the stem so that the leaves appear trefoil (three lobed). It's a vital foodplant for the common blue, the green hairstreak, the dingy skipper, the silver studded blue and the wood white butterflies, the latter two being Priority Species under the UK Post-2010 Biodiversity Framework indicating their scarcity.

We are looking forward to seeing gradual change occurring in the Community Field and will continue to work towards improving the biodiversity of this valuable space.

## KIRKBURTON NEWSAGENTS



Would you like your newspaper delivering?

Subscriptions are available on the following newspapers—a saving of up to 30%

Yorkshire Post

Times, Sunday Times

Mail, Mail on Sunday

Examiner

Telegraph, Sunday Telegraph

The i daily

Guardian, Observer

We also deliver all other dailies and any magazine

Any enquiries ring 01484-604030

Now at the former Kirkburton Hardware Shop at

74 North Rd Road





Highburton CE (VC) First School

## A small excerpt from our Highburton First School Bee Diary

Bee Club meets every week to learn about bees, their place in the world and how people can help protect them. We spend time at the hive asking questions, investigating and observing the insects.

### Bee diary April – August



The bees had been 'wrapped up' all winter with insulation put around the hive to try and keep them as warm as possible. Beekeepers do not disturb bees through winter as they are working very hard to keep the hive between 32°C and 35°C. In April, when the sun was shining, Mrs Smith felt it was a good time to check to see how they had got on over the colder months.

Once Beekeeping season begins it is important to inspect the hive every week to check on their health and progress. During the initial inspection we couldn't see her anywhere. But as there were brood in the hive we felt it was OK to put the roof back on and check again next week....fingers crossed she's there then.

Next week we weren't lucky with the weather and had to stay indoors. This gave us an opportunity to look closer at some of the equipment we had seen in use last week. We collected a range of

things to take back to school to investigate. We set out all the equipment in the DT area and talked about each piece. There were frames of different sizes and stages, a hive, queen excluder, hive tool, smoker, collected wax and a water sprayer. We were very interested in the wax on the frames. Bees wax is used by people for many things and created by bees naturally.

YEEY! The sun was out this week so we could come to the hive and see how the bees were doing.

We had to do our basic inspection but this time we spent time looking for the different types of bees - workers, drones and the queen.

**Worker bees** - These are the girl bees, they make up the majority of the hive. Workers live around six weeks in the warmer months and up to six months during the colder

months. Workers do everything in the hive including cleaning, nursing, feeding, foraging, making wax, guarding the hive and of course making the honey. They are very busy bees.

**Drone bees** - Drones are boy bees. Their only role is to leave the hive and mate with a queen. Once they have fulfilled this role they die as they are no longer functional. Inside a healthy hive of 50,000 bees there will only be around 200 *drones* during high summer peak time. *Drones* depend on worker bees to feed them.

*Drones* die off or are ejected from the *hive* by the worker bees in late autumn

**Queen bee** - There is only one queen in the hive. The queen's two purposes are to produce chemical scents that help regulate the unity of the colony and to lay lots of eggs.

Queens generally live around three to four years, as long as they are functioning and serving the hive well. If she is not laying enough eggs or laying too many drones she may be forced to leave.

#### There are three things beekeepers inspect for:

**The Queen.** The colony needs a Queen in the hive to lay eggs. As bees do not live very long (up to six months during winter and six weeks during warmer months) it is extremely important that the Queen is laying new eggs all the time so the colony can continue.

**How many frames of brood.** Sealed brood cells have an egg laid in them. If the baby is going to be a worker bee (girl) the cell will be flat. If the baby is a drone (boy) the cell is raised up as boys are bigger and need more room to grow.

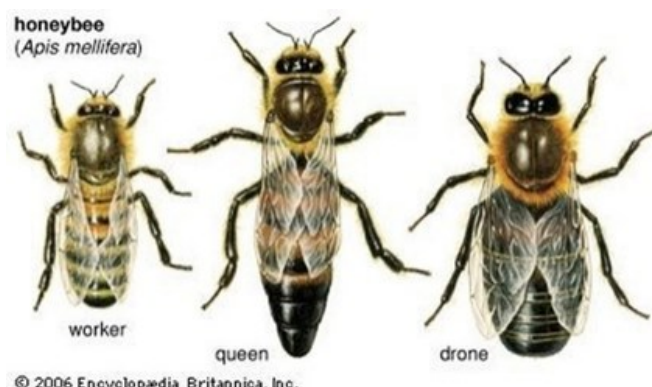
**How many frames of stores (honey)** Stores are eaten by the bees and can only be sealed when they are the right consistency. Raw honey is clear in the cell but once it is ready the bees seal it with a light yellow wax to keep it fresh.



#### How is wax made?

On the underside of a bee's abdomen, each worker (girl) bee has four pairs of wax glands. Liquid wax is excreted from the wax glands and it dries into clear flakes or scales. The bee grabs the wax scale and uses its legs and mouth to mould the wax into hexagon cells.

Young adult bees produce the most wax. Most of the honeycomb in the hive will be built by bees between 10 and 18 days old.



© 2006 Encyclopædia Britannica, Inc.



# Help to make ours an Environmentally-Friendly Community — ‘Make a Difference’



## The Food We Waste

According to research, 65% of UK adults admit to buying too much food. The UK throws away around 10.2 million tonnes of food waste in a single year – even though 8.4 million people in the UK are in food poverty.

Food thrown away usually ends up in landfill and it isn't harmless, it causes as much damage to our planet as plastic waste because, as this waste breaks down, it releases methane, a greenhouse gas which is 25 times more potent than carbon dioxide for the environment. The food we, in the UK, throw away creates more than 20 million tonnes of greenhouse gas which is about the same as emissions of 3.5 million cars. Add to it are the energy and resources used in production and transport cost of that food

On average a UK family will throw away about £840 of food per year, £70 a month just thrown in the bin! Food not being consumed within 'use by' time, cooking too much, too much being served, accidents and personal preferences all contribute to this waste

No one in this world should go hungry, we produce enough food to feed all, but over a third of it goes to waste, if only this food could be given to the poor and undernourished people in the world, we would have

enough to provide them with 10 meals a day every day.

The U.K. has improved its food waste figures in recent years and particularly last year during the pandemic but we still throw away an astonishing amount of edible food, potatoes being the most wasted single food but mainly it's fresh veg and salad which could be composted at home and end up as a soil improver to benefit the garden.

The Real Junk Food Project ([trjfp.com](http://trjfp.com)) a Leeds based charity with seven sites across Yorkshire redistributing surplus food, is one of the UK's largest environmental organisations. Fareshare Yorkshire <https://www.fareshareyorkshire.org> redistributes food and provides meals.

So now it's over to us to reduce food waste...Here are some tips to get started:

- An organised kitchen is a key starting point to creating zero waste. Overfull cupboards or fridges have older food hiding at the back and are a recipe for out-of-date horrors.
- Move everything approaching its use by date to the front and know the food that goes off first.

- Write a weekly meal plan.
- Buy only what you need...buying something cheap because you get a lot for a low price frequently leads to waste... keep a track of what's in your cupboards and fridge.
- Check 'use by' dates of fresh food, these are the dates to take notice of rather than the 'best before' dates.
- Get portion sizes sorted so you are not cooking or serving too much.
- Use leftovers for other meals, or freeze... You only need to rotate a handful of
- dishes throughout the week to use up the ingredients you've bought...get creative, adapt a simple dish into something else.
- Get to love your freezer.
- Don't forget canned food for convenience and longevity. Keep all leftover cooked odds and ends in a bag in the freezer, when it's full make a batch of soup.
- Use leftover fresh fruit and veg to make a smoothie.
- Batch cook.
- With Christmas coming and shops only shut for a single day we don't need to buy as for a siege

*Research for this article is mostly via 'Wrap' from 2019 - 21 [ Waste and Resources Action Programme]*





# Plastic — another point of view

The last issue of The Bulletin included an article “Plastic Friend or Foe?” about the possible impact of plastic, particularly single-use plastic products on the environment.

The article provoked a letter from one of our readers. But unfortunately, the author did not supply their name and address.

As is clearly stated on our letters page, we are willing to consider publishing letters anonymously, but we do require that the author provides their name and address to The Bulletin.

This is standard practice for newspapers in this country.

However, we at The Bulletin are concerned not to appear to be stifling debate on such an important issue as climate change.

We have therefore decided, exceptionally, to publish the letter. However, in general our intention will be to stick to our stated policy that names and addresses should be provided.

Here is the text of the letter:

*To: Burton Bulletin*

*Sirs,*

*Your article in the August edition entitled Plastic – Friend or Foe refers.*

*The figures quoted in the latter part of the article come from a study of San Francisco Bay waters ... not a typical open sea environment, they are also extrapolated unscientifically for effect and have been questioned.*

*In this happy, prosperous enclave of ‘Burton’ perhaps we should get milk from the milkman rather than the supermarket BUT maybe there are people who buy from a supermarket because it fits in with their available resources, maybe mulching is wonderful ...if you have an area to mulch, buying items in glass bottles/jars is fine .. but they are heavy to carry on and off the bus and heavy to return for recycling. Maybe bottled water is good but I trust Yorkshire Water and just use the tap.*

*I do agree that “I want to make a difference” and do try; but perhaps your publication should constrain its preaching to a realistic level.*

*Anon*

# Plant a Tree

In the UK only 13% of our land area is woodland cover. This is much lower than the EU average of 37%. We’ve written a lot recently about how we can improve our local environment and increase biodiversity. In terms of helping our environment and biodiversity, planting a tree is one of the most important, yet simple things any of us can do.

Planting a tree can help to absorb carbon, provide shade, improve air quality, combat climate change and help animals and insects. Trees also protect our landscape against flooding, and erosion and improve our air quality.

What kind of tree should you plant?

Well, that’s up to you.

Things to consider when choosing are what size would suit your garden, whether you’d like to have blossom and fruit,

or what wildlife you’d like to attract. Different trees will attract different species, so it’s always worth doing a bit of research before deciding.

Things to consider before planting a tree are where to place it ~ (think about both you and your neighbours’ gardens) and how the roots and branches may spread. Check what time of year your tree is best planted, and how long it will take to grow. Check whether it needs staking or protecting, and how much maintenance it might need in the first few months or years.



## New Gardening Club at Kirkburton Middle School : Can You Help?

Kirkburton Middle School in partnership with Burton Environment Group (BEG) are undertaking a gardening project commencing January 2022.

The BEG Gardening CANE project will involve a group of 12 to 15 children.

Do you have any spare gardening tools eg trowels, rakes, spades or children's gardening gloves you might consider donating?

Do you have any spare bulbs, corms, herbs, perennials or packets of seeds? Any donations would be greatly appreciated.

If you can help, please drop off any items at Kirkburton Middle School for the attention of Tracy Clark (Pastoral Lead) and BEG member (Daisy Priest).



Est. 1998

## GRANITE

WORKTOPS UK LTD



**FAMILY RUN BUSINESS OFFERING OUTSTANDING QUALITY AND SERVICE**

SHOWROOM 97 WAKEFIELD ROAD | ASPLEY HUDDERSFIELD | HD5 9AB

 **TEL: 01484 516133** 

**WWW.GRANITEUKLTD.COM**

We are still providing our templating, manufacturing and fitting service. We can be contacted via email or phone on 07711 288910 for assistance



# Visit of relative of one of our WWII casualties to the Memorial Garden in Kirkburton



Brian in the Memorial Garden with Anna Boden of BEG and Andrea Tindle of Kirkburton History Group

On Wednesday 13 October Burton Environment Group (BEG) and Kirkburton History Group welcomed a special visitor into our Memorial gardens. Brian Hill had travelled from Bournemouth, Dorset to visit the cenotaph where his father Frank Hill is named. We have never met anyone who has travelled so far to meet us and it was a very special moment.

Brian and I have been in contact by e-mail and phone since January and Brian has been wanting to

make this journey for quite some time but Covid restrictions and fuel shortages meant this meeting was delayed. The last time Brian set foot in Kirkburton was over 60 years ago.

Until our search for photos of our WWII fallen, Brian had no idea that after all these years, his father was remembered on the Roll of Honour in All Hallows Church, Kirkburton or on the Cenotaph in our Memorial Gardens. Brian was born in 1939 and his mum and grandparents never talked about his father and consequently Brian has been trying to fill a lifelong void left by his father's untimely death.

To make the visit a little more special we took Brian to visit places he remembered or had heard about. Our first stop was into All Hallows church to see his father's name on the Roll of Honour. We then went down North Road (near Linton's) to where his "Hill" grandparents lived and up Slant Gate where his father was living before, he married. We drove to Storthes Hall Hospital site where his mother worked and on to Thunderbridge where his mother had fond memories.

Our next port of call was Cote Close, Shelley where his father Frank was born to William Stanley and Jane Hill. We visited St Paul's Church, Shepley where his grandparents were married in 1916. (We gave Brian a copy of the marriage) and then on to Park Head, Cumberworth Lane, Birdsedge where Brian's parents started married life. After a light lunch at our place, Brian was presented with a small gift of a plate of Storthes Hall.

I thought Brian was going to dissolve into tears, so I pointed out that it was from the local charity shop, and tears turned to laughter.

Brian, his sister and other family members will be attending the unveiling of our WWII Memorial Board on Remembrance Sunday, 14 November at 10.45 am.

Lest we forget.

**Anna Boden**



Brian with Anna Boden of Burton Environment Group.

See Brian's account of his father Frank Hill's life on pages 16 & 17

## IT Services

- **Computer repair**
- **Installations**
- **Home visits**
- **Electrical systems**
- **Networking**
- **Phone systems**
- **Servers**
- **24/7 Support**
- **Management**

**TechTeach**  
Communications

7 George Street, Kirkburton, Huddersfield, W. Yorkshire, HD80SF

24/7 365 days a year Tel 01484 605 113

**"TECHNOLOGY TAMED"**

## Abode

Professional Builders

Est. 2001

Extensions

Sun rooms

Masonry work

Conversions

New Builds

Roofing

[www.abodebuilders.co.uk](http://www.abodebuilders.co.uk)

**Tel: 01484 603103**

The Media Centre, 7 Northumberland Street, Huddersfield, HD1 1RL



## Featured business

# The White Swan

Before the pandemic we opened every day at 12 noon with a steady trade of largely retired chaps who enjoyed two or three pints, a chat and a laugh from 12 until around 2pm. There would generally be a lull until 3pm when the tea time trade would start to arrive, leading to a busy spell until around 7pm. The quiz on a Tuesday evening would be a busy affair with a full house most weeks.

However, since reopening in May, we have found that our trade has shifted to some degree. We are generally quieter Monday to Wednesday although I am pleased to say that since restarting the Quiz on a Tuesday evening, this has gone from strength to strength and we are now not far short of pre-pandemic numbers on a Tuesday.

The biggest difference we have found is our food trade. This has become very popular and I now find myself in the position of explaining to callers on the phone that unfortunately we are fully booked! Friday and Sunday in particular are proving to be very popular.

We serve food from Thursday to Sunday and have tak-

en the very deliberate decision to source the best quality meat, fish and vegetables we can whilst not overcharging for the privilege. This, along with the talents of our chef has resulted in a growing reputation, of which we are very proud.

It has always been a priority of mine to serve a range of great quality cask ales and we continue to do this, with up to five cask ales usually available and in July we were inspected by Cask Marque during an unannounced visit.

As an aside, it is interesting to observe the Cask Marque inspector at work. One might think it sounds like the best job in the world. Casually turning up at a pub which has applied to join, demand a pint of each ale and proceed to sup them all in order to 'assess' them.

The reality is slightly different. The inspector, a smartly dressed rather serious looking man of around sixty arrived a few minutes after opening one day. A handful of regulars observed as he opened a



leather satchel he was clutching and pulled out various forms which he informed me he would fill in as the inspection commenced.

He ordered a full pint of Wainwright. I pulled the pint as I would normally do ensuring a nice head, but not too much. First of all he placed his nose almost in the glass and took a long sniff of the aroma. It was almost comical the way he did it and I could feel the sideways glances of the regulars as he loudly sniffed then noted down his observations. He then held it up to light from the window, presumably assessing the clarity. Further notes were written. I had no idea what he was writing but it seemed intense, the way his Parker ballpoint with maroon stem was furiously scratching the carbon paper.

Finally he took a long single taste of the ale. He licked his lips, before attacking the carbon form again. I thought the form must be in triplicate; it would seem that his deep findings about the state of my Wainwright would be sent to various other agencies for their deliberation and judgement.

The whole process was repeated five times, for all the ales that were on sale that day. Just when I thought he had reached a conclusion he

conducted a cleanliness test on a glass at random from behind the bar. Again, followed by copious notes and box ticking.

I know that I do my best to keep a good cellar. I use the best products I can to clean the lines and run the glass washer. Yet I still had no idea what the verdict would be. The inspector, with his inscrutable features, would make a very good poker player. Finally he looked up over his horn rimmed spectacles and said nonchalantly that the ales were excellent. He handed me a copy of the report which was actually in duplicate with Cask Marque retaining the original. He fastened up his bag, said we would be tested again in six months and bid me good day. Off he went, on to the next establishment probably.

It is approaching four years since we took over the White Swan and obviously there have been changes and upheaval along the way but I do think we are still what we want to be, a local pub with fantastic regulars yet also a well-regarded eatery providing great quality food at a reasonable price.

Here's to the next four years... less eventful but just as interesting I hope.







## News from All Hallows Church - Welcome to our Green Flag awarded community churchyards



*All Hallows  
Churchyard Team*



In late 2000 the state of the churchyard had become overgrown and in a dilapidated state. A small group of volunteers decided to restore it to its former glory and make it once again a haven for wildlife and encourage the many species of wild and spring flowers to develop and flourish in designated areas for the benefit of this magnificent village church whilst maintaining the various areas with dignity for a place of respect and contemplation.

This small group of around eight, with help and assistance from the church, have been awarded this prestigious award every year from 2006 and now in our 15th Year

During the various seasons areas of the churchyard are resplendent with wildflowers along with colour and beauty as well as a place of sanctuary both for visitors and the many species of animal and birdlife which flourish in these abundant areas. The churchyard has large number of visitors during the year, many to

visit the memorials, but an increasing number of international visitors researching family history. We now have a new resource. [www.kirkburton.burialgroups.co.uk](http://www.kirkburton.burialgroups.co.uk) which allows visitors to find and research our records in both of our churchyards.

Without the ongoing help and assistance of this dedicated team of volunteers, the churchyard would return to an unkempt wilderness as is all too apparent in many churchyards today. The village would lose the

advantage of large green open spaces and wildlife areas, as well as place of peace and quiet reflection in the centre of the village.

Help and assistance is always needed, even if you only have an hour to spare we can put it to good use. Pop in and see us - we are there most Saturday Mornings.

We now have an "adopt a grave" scheme which has just started, please contact the church for information.

### Remembrance Sunday Service

this year will be held on

**Sunday 14 November 2021 at 10:45**  
in the  
**Kirkburton Memorial Gardens**

This outdoor service of remembrance will be led by  
Reverend Stephanie Hunter

It will be at this service that the new WWII Memorial Board will be unveiled and dedicated



**Dene End Funeral Service**  
**01484 602901**

Privately Owned & Independent  
Serving Kirkburton, Highburton & All Areas of Huddersfield  
Private Chapel of Rest – Private Meeting Room  
Pre-Paid Funeral Plans Available

50 North Road, Kirkburton, Huddersfield, HD8 0RW  
**01484 602901**



# Heritage Day and Adopt a Grave Scheme

First of all a big thank you to everyone who shared in our Heritage Day. Whether you were involved in planning the event, contributed on the day, or were a supporter of or visitor tour Heritage Church, it was a resounding success and enjoyed by all.

The day was chilly but clement. The displays were vibrant and interesting. The cakes were delicious and the coffee most welcome.

The History Group is a treasure trove of information about the village and the church which they were happy to share. Robert Carter, as always, the fount of all knowledge

Although we couldn't do tours of the Bell Tower, on the day, our bellringers were on hand with a video and their personal insights into the art of campanology.

Philip Sutcliffe provided an organ recital which filled the church with melody and atmosphere and, as always, Hade Edge Band lifted our spirits inside and outside the church.

Charlotte Atkinson representing the Youth Groups raised money through a Treasure Hunt which was presented in an original way.

We launched the Adopt a Grave Scheme successfully. Many of the graves we chose as suitable for adoption were adopted on the day. Young and old families and individ-

uals expressed their support and interest. It is an ongoing project, so if you aren't already involved, but would like to be please get in touch.

It was nice to be able to show our new volunteers the results of the hard work of those who have already given their time and effort. The future of the graveyard is in your hands.

Finally, our thanks to all the local businesses, tradespeople and individuals who donated raffle prizes (and those who bought tickets, winners or not). All the monies raised will be used for the benefit of the church and he local community.

Georgina Dickinson



**IRONING / DRY CLEANING / REPAIRS**

**KIRKBURTON**

113 North Road  
Kirkburton  
Huddersfield  
HD8 0RL  
Tel. 01484 602031

Mon Closed  
Tue to Fri 8:30 – 5:30  
Sat 9:00 – 12:00





# The story of Private Frank Hill, Royal Army Medical Corps,



7374184 Pte Frank Hill, 198 Field Ambulance,  
Royal Army Medical Corps

My father Frank Hill was deemed to have been enlisted into the Royal Army Medical Corps Embodied Territorial Army on 5th March 1940. He was posted to 198 Field Ambulance based at Macclesfield and achieved Nursing Orderly status in December 1940.

Following some 19 months of home service he was sent to Malaya in October 1941 (aged 23) and arrived in Singapore January 1942. He was reported missing after the fall of Singapore in February 1942. My mother received a Certificate of Death from The War Office dated 21st February 1946 certifying that my Father was presumably killed in action on 14th February 1942 while serving in the Far East.

The last time my mother saw my father was when he left Macclesfield by train to go overseas in 1941. I remember her saying I was in her arms. The last contact my mother had from my father was a telegram from Singapore received in February 1942 which ended with the words 'all well and safe, please do not worry'.

When I was young my mother and grandparents would never talk about the War or my father. I there-

fore had little knowledge of him. As a schoolboy I could not understand why my father's name was not included either on the WWII cenotaph at Conisbrough, South Yorkshire where I was born, or at Kirkburton where my he had been born. It was not until 1987 (42 years after the war ended) that I became aware, through my wife's contact with the Imperial War Museum, that my father's name is commemorated at Kranji War Cemetery in Singapore. He has no known grave.

I was on a business trip to the Far East at that time and was fortunate to be able to change my return travel arrangements to visit the war memorial and cemetery in Singapore and see my father's commemoration for the first time. This was an enlightening experience. I visited again in 1989 with my wife to celebrate my 50th birthday, also in 1993 during a business trip to Malaysia, and again in 2019 when I was 80. A few years ago, my son-in-law (Marty Slade Colonel RAMC, now retired) traced my father's service records and found out that my father was one of the few survivors of the

Japanese Army massacre at, or near, the British Alexandra Military Hospital in Singapore and was taken prisoner in February 1942.

Some evidence at that time suggested he was transported to No.1 POW Camp at Changi in Singapore. This was unbelievable news to find (65 years after the war ended) that my father had escaped the atrocities at the hospital in Singapore and not being killed there. My son in law continued his research and discovered that my father was, with five others, sent 'up-country' in November 1942. He may well have been sent to Thailand to work on the infamous Burma railway.

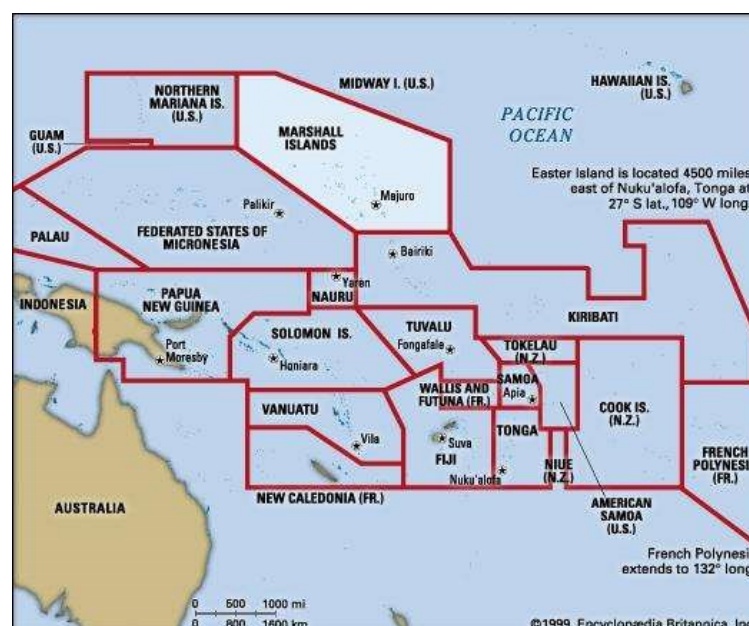
Marty Slade then miraculously discovered a surviving copy of a journal produced by some of the inmates. Some of the inmates had signed the journal and amongst the signatures can clearly be seen the signature of my father. I had not previously realised that he had survived the Singapore hospital massacre.

I was however aware of how badly the Japanese Army treated prisoners of war - they were over-worked in the tropical sun, beaten and starved. Additionally, they were at risk of contracting and dying of dysentery. So, the odds of my father sur-

living the war would have been very poor.

In September 2019 when I was 80 I visited the Alexandra Hospital in Singapore with my eldest daughter and son-in-law. We met Tan Ding Xiang who devoted a great deal of effort to perpetuating the memory of the 1942 hospital incident.

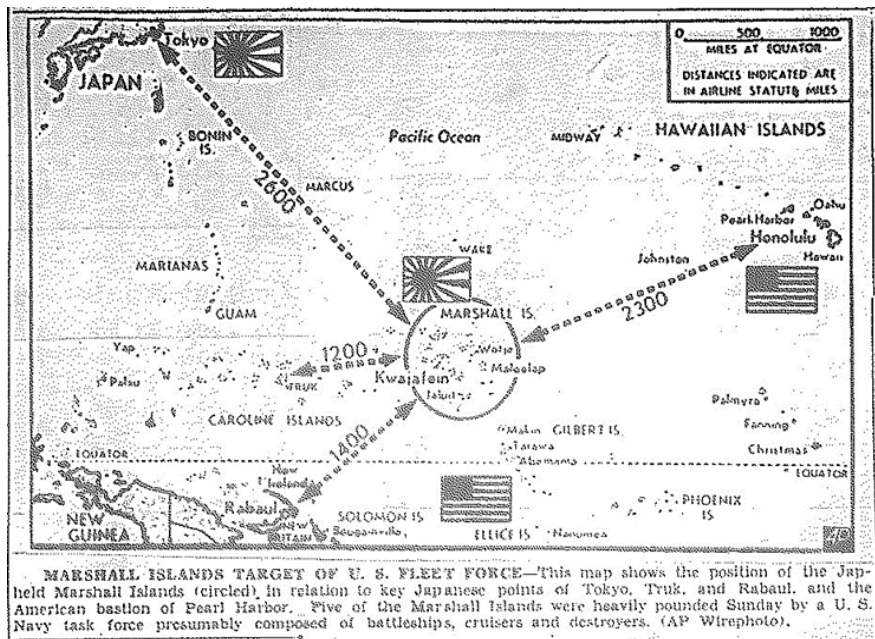
Tan had sent my father's details to the Far East Prisoners of War (FEPOW) family members and received several responses with additional information about my father. We discovered that my father had been put on a ship named the Kenkon Maru with a large group of POWs including five others from the RAMC as medical support to the Royal Artillery "Gunnery 600 Party" in October 1942. This ship became known as a 'hell ship' because of atrocious conditions but it arrived at Rabaul in Papua New Guinea in November 1942. A total of 599 POW's disembarked (one POW had died during the voyage) and were transported to Kokopo. While 82 men were left behind at Kokopo as being unfit to travel, the remaining 517 were taken to Rabaul and departed on a different 'hell ship' at the end of November 1942 to Ballale Island, one



The Southern Pacific theatre during WWII



## as told by his son, Brian Hill



Area surrounding the Marshall Islands in the Southern Pacific in WWII

of the Solomon Islands, where the POW's were forced to build an air strip. Some POW died of illness and many prisoners were killed in an American air raid as the Japanese had not allowed the prisoners to dig trenches to take cover. It is reported that with the news received by the Japanese that the Americans were closing in, orders were given that the remaining POW's were to be disposed of by any means. Accordingly, those POW's still alive, including the medics, were massacred in cold blood and not one of those taken to Ballale Island survived.

There were however 18 survivors at Rabaul who were recovered by Australian Forces after the war ended. The War Office were not aware of the Gunners 600 Party on Ballale Island until after the war had ended. The massacre was reported by natives who witnessed the killings. The mass grave was discovered at the end of the war. It was estimated to contain the remains of 435 men. The other 82 men are assumed to have died or been killed by the Japanese. These men could not be identified individually, and were only identified by the British Army equipment they were wearing. They were re-buried in a tempo-

rary War Cemetery at Torokina on Bougainville before being transferred to their present resting place in individual graves at Bomana War Cemetery, Port Moresby, Papua New Guinea in December 1945 where they are tended by the Australian War Graves Commission.

This Cemetery was commenced in 1942 by the Australian Army. The names of the Gunner 600 Party are all honoured on the Singapore Memorial as having "No Identified Graves". Rabaul and the Solomon Islands were defended by the Australian Army during WWII until they were overpowered by the Japanese in June 1942. The Japanese used POW's labour to construct airfields to protect their captured territories. Ballale Island is a small island of the Shortland Islands Group, in the Western Province of the Solomon Islands, south of Bougainville. The original Ballale Roll of Honour contains 504 names of Ballale Island victims and includes five RAMC in the list.

Although the list did not originally include my father's name, however, in late 2019, based on the Gunners 600 Party Roll

and Japanese POW Registration Card, FEPOW Family Members concluded that my father was part of the 600 Group and added his name to the Ballale Roll of Honour. Although there are some uncertainties and my Father's name is elusive, it is believed my father died on Ballale Island.

The official date given for the Ballale Island massacre is 5 March 1943. After the war interviews with natives, Japanese, Koreans and Chinese suggest June 1943 may be nearer the truth. I may never know how my Father died and there is no known grave. My Father's name does not appear on the Rolls of Commonwealth War Cemeteries at Rabaul or Port Moresby.

I have visited the Imperial War Museum and National Archives at Kew and have seen the original manifest of the Gunners 600 Party overseas from Singapore (Changi) in October 1942 with my father's name on it. I also discovered some conflicting facts from some Singapore and Rabaul survivors. There are some inconsistencies and ambiguities in the records which leave open a number of questions which I would still like to clarify.

In 2021 I found out that my father is remembered at Kirkburton. The names of those who fell in WWII including my father were added to Kirkburton WWII Cenotaph in 2009, but WWII names have been displayed inside the Church for longer. Their names are read out during the Remembrance Sunday service.

Frank Hill was born on 4 July 1918 at Cote Close, Shepley. My mother was born in October 1918 at Shelley. They were married in Huddersfield in 1938 when my father's occupation was given as a Woollen Warper. They lived at Slant Gate. My mother was a mental hospital Nurse who lived at Storches Hall. My parents later lived at Park Head, Cumberworth in 1939. My father's parents lived in North Road, Kirkburton.

I was born in March 1939 at Conanby, Conisbrough, near Doncaster in my mother's parents' colliery house. My Mother, myself and my sister Thelma lived with my grandparents their family of three sons and a lodger.

**Brian Hill**

(see the report of Brian's visit to Kirkburton on page 12)



Bomana War Cemetery, Port Moresby, Papua New Guinea



# Kirkburton Middle School



The start of a new school year is always an exciting time, however, this year has felt particularly special. There has been a real sense of optimism around the building and our very special school has felt just that little bit more special this September. With many Covid restrictions now lifted, it has been great seeing the pupils moving around the building to specialist rooms once more, friendships, which had been split by bubbles, have been reformed and our legendary extra-curricular offer is starting to take shape once again.

At the time of writing, we have just finished week six of the autumn term and what a busy few weeks we have had! Our usual transition programme was limited due to Covid restrictions this summer, yet our new Year 6 cohort has settled extremely well. We were able to run a very popular transition summer school during the first week of the summer holidays and I'm sure this helped settle a few nerves – both for pupils and parents! The effort levels, behaviour and work rate in lessons from Year 6 has been exemplary and it has been great seeing them getting involved with all the enrichment opportunities on offer. We have also been extremely impressed with the mature and resilient attitudes displayed by our

Year 7 and 8 pupils as they return for what we hope will be a school year with far fewer disruptions. We couldn't ask for better role models.

It was fantastic to see so many people at our Open Evening at the end of September. Our pupil leaders were fantastic on the night; they sold the school for us and we were extremely proud of them. For those who missed the open evening, a copy of my presentation from the night can be found in the transition section of the school website. Prospective parents are always welcome to come and view the school at any time; please contact the office to arrange this.

It has been so good to see pupils taking part in competitive sport once more and a lot of our teams have experienced success during the first few weeks of term. We are always keen to participate in as many sporting fixtures as possible both at a local and national level and, looking at the talented athletes we've currently got in school, I'm confident we'll be adding some more silverware to our already rather full trophy cabinet this year.

Not to be outdone by the PE department, we have had lots of pupils taking part in a wide range of extra-curricular activities and clubs now that bubbles have gone. Our clubs this term include; gardening, craft, Scrabble, school newsletter, science, Warhammer, languages, homework and much more.

We're delighted to announce that our annual carol service at All Hollow's Parish Church will return on Wednesday 8 December. We do hope you will be able to join us on the evening and we'll share further details via the usual channels nearer the date. Our musical groups and choirs are already very busy rehearsing for the event.

We are also looking forward to our first dramatic performance of the year on Wednesday 15 December. The newly formed Kirkburton Drama Academy are looking forward to showing off their talents on the night.

All of the above doesn't happen by accident and I'd like to thank all the staff for their efforts to make the

start of term run smoothly, parents for their ongoing support of the work of the school and finally our wonderful pupils who have been so fantastic on their return to school. I'd also like to say thank you to the wider community who, as always, have been extremely supportive; we remain extremely keen to engage with any community events so please get in touch.

After such a difficult period in school, we couldn't have asked for a better start to the school year and I can't wait to see what the rest of the year will bring. I'm sure it will be an extremely positive year for all connected with KMS, one filled with 'Enjoying, Achieving, Succeeding Together.'

**Mr Taylor, Headteacher.**

01484 222737

[office@](mailto:office@kirkburtonmiddle-school.co.uk)

[kirkburtonmiddle-school.co.uk](http://kirkburtonmiddle-school.co.uk)



115 North Road, Kirkburton,  
Huddersfield, HD8 0RL

T 01484 602225

E [sales@experiencetravel.net](mailto:sales@experiencetravel.net)  
[www.experiencetravel.net](http://www.experiencetravel.net)

*More than ever our clients are telling us how much they are looking forward to travelling the world once more.*

*Based in Kirkburton for over 30 years, our very experienced team are here to assist you with your next trip away so please support your local independent travel agent.*

*Get in touch for help in booking your next adventure!*







# BURTON HILLS



## OUR COMPREHENSIVE RANGE OF SOLUTIONS

### Financial Planning

inc. Lifetime Cash-Flow Modelling

### Investment Planning

inc. Portfolio Management

### Retirement Planning

Pre-Retirement, At Retirement & Post Retirement Advice

### Protection Planning

For You, Your Family & Your Business

### Tax & Estate Planning

inc. Trusts & Inheritance Tax Mitigation

### Mortgages & Finance

inc. Re-mortgages & Equity Release\*

Your home may be repossessed if you do not keep up repayments on your mortgage

01484 767840

07778 298133

[burtonhills@sjpp.co.uk](mailto:burtonhills@sjpp.co.uk)



**REGIONAL  
PARTNER**  
2021/22 SEASON



Trusts are not regulated by the Financial Conduct Authority

Equity Release is a lifetime mortgage or home reversion plan. To understand the features and risks associated with such products, please ask for a personalised illustration

Burton Hills Wealth Management is an Appointed Representative of and represents only St. James's Place Wealth Management plc (which is authorised and regulated by the Financial Conduct Authority) for the purpose of advising solely on the Group's wealth management products and services, more details of which are set out on the Group's website [www.sjp.co.uk/products](http://www.sjp.co.uk/products)



# MP's Report — Mark Eastwood MP



The return to Parliament in earlier in September was swiftly followed by another recess for the party conference season. The benefit of this though, was that I was able to spend more time in the constituency and get out more now that restrictions have eased.

I enjoyed hosting a “Cuppa for Kirkwood” at the Woodman Inn on 24 September which was well attended and I also did a sponsored sky dive to raise more money for Kirkwood and whilst some monies are still coming in I have managed to raise around £4,000. The Hospice is an important local charity that helps people from first diagnosis through to end of

life care and also provides crucial support to friends, family members and carers whose lives are also affected by these challenges.

I would like to thank everyone who donated and also to the team that baked the cakes for me for the event as well. This was a good day for me as that evening I also attended a dinner at Woodsome Hall with Kirkburton Conservatives and it was great to welcome my close friend James Daly MP to come and speak at this event with me. It was great to be able to once again start holding social events like these which have been greatly missed during the

pandemic.

As I write this report it is now only 74 days to Christmas and I am sure you have all started to notice the Christmas goods appearing in the shops. Well, thoughts towards Christmas have also started for me as well and I have launched my Christmas card competition and would love schools and indeed parents to encour-

of skilled jobs a priority since I was elected and it was good to see this fair finally come to fruition after being delayed a year by the pandemic.

September saw our schools return and I am looking forward to getting back to visiting schools and talking to students. I am keen to see all of our students succeed and know that the last two years have been very difficult and I



age young people to design a card and enter the competition, details of which are shown in the poster (below on the left). Last year Ewan Plumb from Kirkburton First School was runner-up in the competition, so maybe this year we may see a winner from either Kirkburton or Highburton.

In September I held my Skills and Apprenticeship Fair at Pioneer House, part of Kirklees College. We had local and national employers present, talking to students about career choices and the types of jobs and apprenticeships that are available. The feedback from students, teachers and employers was very positive. I have made helping local businesses grow and attracting the right sort

hope that this year will see schools returning to normal. I also hope to welcome more school trips down to Westminster as I did with Shelley College just before the start of the pandemic.

During Mental Health Week I was pleased to be able to visit Platform One in Huddersfield which offers crucial support and activities to help men who are struggling with mental health issues and seem to be more reluctant to seek help.

Organisations like this are crucial to supporting people who have been impacted by lockdown and I am happy to help promote their work. More information about the services that they provide can be found at <https://platform-1.co.uk/> or by contacting 0800 066 28 28.

**CHRISTMAS CARD COMPETITION**

Mark Eastwood MP invites children across Dewsbury, Mirfield, Kirkburton and Denby Dale to send him their best designs for his annual Christmas Card. There will be prizes for the winner and runners up!

- Open to all Primary School aged pupils.
- Entries must be received by 17th November.
- Send your entries to:  
Mark Eastwood MP, 5 Northgate, Dewsbury, WF13 1DS  
or email a high quality scanned image to: [mark.eastwood.MP@parliament.uk](mailto:mark.eastwood.MP@parliament.uk)
- Entries can be posted to me individually by parents or altogether from the school. Please remember to include the child's name, school and age.
- The minimum size is A5 (1/2 Sheet of A4) or A4, either in portrait or landscape format.



# Letters

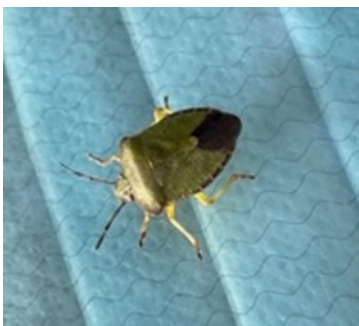
*We want to hear your views, comments and suggestions. No personal attacks, unpaid-for product, services or party-political promotion (you can deliver your own leaflets). Where political points are made (however subtly), to ensure balance, we will ask other parties to put their view. We will even consider publishing your letters anonymously (as long as you tell us your name and address). We do, however, reserve the right to edit any letter you send as we do not have unlimited space, so keep it short.*

## Slant Gate

Dear Bulletin

I would like to thank the person(s) who has recently cut the ivy from the dry stone wall running the whole length of Slant Gate. It must have been a massive and difficult job and taken them ages. The council "trimmed" it about five years since, but did not do a thorough job like this person(s) has done. I walk regularly down and up Slant Gate and it is so much easier now with that dreadful ivy cut down. I think you deserve a knighthood whoever you are. Sincere thanks from me.

**Highburton Stroller**  
(name and address supplied)



## Strange Bug in Burton

Dear Sirs,

This strange creature attached itself to our wind-screen whilst travelling down Storthe's Hall Road last week. It's very similar to the 'Stink Bug' reported in the Daily Mail on 7th October - and thought to be in Southern England only but apparently it causes havoc to fruit farmers. They bite and give off a putrid smell. Has anyone else seen one in Kirkburton?

Frances Ives

## Beyond the Mill Deli

Dear Bulletin,

If you have not tried this new eatery then we would definitely recommend it. You are warmly greeted at the door and shown to your table. The decor is clean, modern and spacious and the service was very quick.

On our first visit we shared the 'Carnivore' which was packed full of five tasty cheeses - Cheddar, Harrogate Blue, Barncliffe Brie, Red Leicester and Wensleydale as well as a selection of continental meats, pickles, fruit, nuts, bread and crackers. It was served with a portion of 'Mill' pesto and flavoured butter. The sharing platter was massive and could have fed three easily.

On our second visit we ordered a club sandwich (chicken, bacon, lettuce, tomato, mayonnaise and sweet chilli jam) and chicken souvlaki flatbread (spicy chicken, lettuce, tzatziki, tomatoes, red onion, and fresh mint in a toasted flatbread).

We will be back to try your breakfast. In the meantime, wishing you all the very best in your new adventure.

**Anna Boden**

*(We hope that The Burton Diner will be able to review Beyond the Mill for a future edition of The Bulletin—Ed)*

## Road works

Dear Residents,

Back in January 2019 I secured some funding from Kirklees Council to improve the junction of North Road and Penistone Rd, on the left-hand side as you approach Penistone Road from the village. I have provided updates in the past via the Community Association and I know that local residents were informed about the proposals back in 2020.

Getting the resources allocated to design the scheme and schedule it in has been an uphill battle and a couple of months ago I secured a commitment for the work to commence on 1 November. I had hesitated in updating the Community Association in case there was a further delay. As residents will no doubt be aware Yorkshire Water are undertaking emergency work in the vicinity at the moment and as a result the work cannot be commenced as planned. It is now anticipated that, subject to Yorkshire Water having completed their work, the improvements to the junction will commence in January.

In a similar vein I, with my ward colleagues and those of Denby Dale, secured funds back in 2019 for a zebra crossing to be installed on Huddersfield Rd by Shelley College to make it easier for students to cross the road safely to the bus stops.

Again, this has been subject to continual delays but I am happy to confirm that this is also one which will now finally be going ahead. I had

been pushing for this work to be done during the Summer holidays as the disruption and traffic management needed to enable the work to be done means it cannot be done during term time. It is now scheduled to be installed at half term in February. On both these schemes I am now getting monthly updates on their status from the Head of Highways after raising the unacceptable delays at the highest level in the Council.

As soon as I, or my ward colleagues, are aware of more details on actual start dates and the likely impact on local roads during the works I will update via Facebook and via the Bulletin if appropriate.

Regards, **John Taylor**  
(Cllr)

[Johnj.taylor@kirklees.gov.uk](mailto:Johnj.taylor@kirklees.gov.uk)

07831 810096

## YOUR LETTERS

**Please send your letters to the Bulletin at [burtonbulletin@khca.org.uk](mailto:burtonbulletin@khca.org.uk)**

**Please remember that we require a name and address to be provided for all letters even if the author prefers to have their letter published anonymously.**



# KIRKBURTON

## HISTORY GROUP



The History Group holding a socially-distanced meeting in the library

As we have reported in previous Burton Bulletins, the History Group have continued meeting together over the last year through a weekly Zoom call. It has not been ideal and many of the projects we'd hoped to be working on have had to be delayed. In particular, we received a very generous grant from Kirklees Council in

2019 to enable us to buy equipment to record oral histories from a range of local people. This project has been halted for the last eighteen months, whilst the events during this time have underlined the importance and urgency of capturing these personal memories of Kirkburton's past before they are lost.

### KIRKBURTON HARDWARE STORE

#### Back to normal Opening Times

Mon Tue, Thur, Fri 8:30am to 4:00pm  
Wed 8:30am to 12:00pm, Sat 8:30am to 2:00pm



01484 606662 [kirkburtonhps@gmail.com](mailto:kirkburtonhps@gmail.com)

We would like to thank all our old and new customers for their continued support during difficult times

There are a couple of projects we have progressed. Firstly, in conjunction with the Burton Environment Group and with the kind support of the Parish Council, we would like to erect plaques in the village to mark the location of the old railway station and to draw people's attention to the historical Kirkburton stocks.

Secondly, we've continued our work providing access to information on All Hallows's Church burial ground and to support the Parochial Church Council's 'Adopt A Grave' scheme. The History Group are working on the grave of the Green Family. Benjamin Green died in Beckett Hospital in Leeds in September 1924 during an operation on the

injuries he received during the First World War. Due to the length of time between the end of the war and his death, he was not included on the village war memorials commemorating the servicemen who gave their lives during that conflict. We would like to erect a plaque on the family grave to correct this oversight.

We are very pleased to announce that recommenced our face-to-face meetings at Kirkburton Library on Friday 22 October 2021 at 10am. We made use of the Library's new Smart Screen to enable members to join in the meetings electronically, using Zoom, if they prefer.

As ever, anyone with an interest in the history and the people of the village will be made very welcome.

Shelley Community Association

Charity No 1149146

## SHELLEY WELLY WALKS



Saturday

1<sup>st</sup> January 2022



Starting from the Village Hall

(covid permitting)

10 am for 6 mile walk

11 am for 3 mile walk

Finishing at the Village Hall

Where light refreshments will be available

Just turn up!

If more info required ring David on 07824351899 or Carol on 07788404707 or email [shelleyvillagewebsite@gmail.com](mailto:shelleyvillagewebsite@gmail.com)

\*\*\*Collection/Donations for SCA Funds for Village Projects\*\*\*



## Bluebell Garden Club

[www.bluebellgardenclub.co.uk](http://www.bluebellgardenclub.co.uk)



The Bluebell Garden Club is a friendly group of plantaholics and garden enthusiasts who meet on the first Tuesday of each month at: St John's Church Hall, Green Balk Lane, Lepton HD8 0EW from 7:30 - 9:30 pm

The club was formed in 1995 and is affiliated to the Royal Horticultural Society, meetings include speakers and demonstrators, plant sales, garden visits, a raffle, refreshments and a monthly newsletter.

Current membership fees are £15 per annum, or £2.50 per visit to come as a guest and try us out. There are no restrictions to membership all are welcome whether you Garden a little or a lot, or not at all.

Speaker programme for the next few months

2 November—Doug Stewart, demonstration 'Amazing Winter Planters'

7 December—Christmas Party

### 2022

1 February — Tracy Foster 'The Secret Lives of Hedgehogs'

1 March — David Allison 'Vegetable Growing for Beginners'

5 April—Roger Parkinson from the Woodland Trust 'Conserving Our Woodlands and Hedgerows'



81 North Road, Kirkburton

Stunning Contemporary Ladies Clothing and Fabulous Accessories

Sourced from throughout Europe, including established favourites,

Ted Baker, Masai, In-Wear, Oui, Fransa, Part Two, Penny Black, Two Danes

and many seasonal ranges.



## Nursery Fee Rates 1st March 2020

UNDER 2	Full Week £195	Full Day £46	Half Day £28	Hourly £6.50
OVER 2	Full Week £190	Full Day £45	Half Day £27	Hourly £6.50

## Why Choose Les Enfants Nurseries?

### Highly Qualified and Experienced Staff

#### All Inclusive Fees

We provide nappies, Sudocrem, snacks, meals, drinks, sun protection cream, tooth paste and tooth brushes etc.  
Free 15 hours per week for 2 year olds, 30 hours free for 3 & 4 year olds

#### Flexible, Affordable Sessions

Term time only for those parents/carers in the education sector. Flexibility with their childcare sessions for those parents/carers who require it.

#### Open 52 weeks a year

Closed only on Bank holidays

#### Local school pick-up and collection

We take and collect children from local schools.

#### Creche Facilities

## Kirklees Healthy Eating Award - Gold Standard

To take advantage of our 5% Discount Introductory Offer or for further general information contact either

#### Total Fitness Health Club

Tandem Mills, Huddersfield HD5 0AL Tel: 01484 513001

email: [tandem@les-enfants.org.uk](mailto:tandem@les-enfants.org.uk) web: [www.lesenfantsdaynursery.co.uk](http://www.lesenfantsdaynursery.co.uk)

#### Dalton Nursery

486 - 490 Wakefield Road, Huddersfield HD5 8PU Tel: 01484 453455

email: [dalton@les-enfants.org.uk](mailto:dalton@les-enfants.org.uk) web: [www.lesenfantsdaynursery.co.uk](http://www.lesenfantsdaynursery.co.uk)



# News from Kirkburton Pre-School

SPORTS HALL, HALLAS ROAD 01484606976, 07858 469446

[preschoolkirkburton@gmail.com](mailto:preschoolkirkburton@gmail.com)

[www.kirkburtonpreschool.co.uk](http://www.kirkburtonpreschool.co.uk)

We do hope that this finds you all well. We have had a busy start to our new term with lots of new children to welcome who are settling in very well to new routines and people – both little and big.

During the first half of this term, we have been celebrating Autumn and talking about all the different colours, how trees are changing, which animals hibernate and have made a lovely big autumn collage of hedgehogs, leaves and toadstools along with a large owl watching over.

The children have enjoyed bringing in acorns, conkers and beautiful leaves to show us all. They have also been bringing in photographs of their family members and learning more about each other.

We are hoping to be able to get and about in the village again now restrictions have eased, and are especially looking forward to trying out the new playing area at High-

burton recreation ground.

We have re-vamped our outdoor area and wish to thank Danny of Rocksteady Landscaping for the amazing job he has done in clearing away the jungle of weeds we had cultivated and to the Parish Council for the grant to help with this. We are looking forward to planting out a wildflower area next spring.

Our thoughts will be turning to Christmas when we return after half term when we will be busy teaching the children Christmas songs, many with actions for our Christmas Concert.

This is always a lovely event for our children and their families who are invited to attend and was sadly missed last year.

As you may imagine it takes a little while for our children to learn the songs so we apologise to any of our families who are hearing Christmas songs being sung at home so soon.



We take children from age two - in or out of nappies. Places available including funded places for up to 30 hours.

Should you wish to enquire about a place at our Pre-School please contact us with your details and we will send a Welcome Pack as soon as possible and arrange for you to visit.

## A POLITE REQUEST TO THE YOUNG PEOPLE IN OUR VILLAGES

Sadly, we have been having a few problems with children/young people who are meeting in the car park after school. Most of the time everything is fine but there have been occasions when there has been lots of broken glass and litter in our play area, and there has been damage to our gates. We appreciate the need for somewhere to meet but could you please remind your children that this is not a public space and we do need the area to be respected and kept tidy and safe.

### Offering a range of services



**Soft Furnishings:**  
Roman blinds, curtains,  
cushions and lampshades.

**Clothing Alterations:**  
Including prom dresses and bridesmaid dresses.

**Clothing Alterations:**  
Replacement zips, shortening of skirts,  
trousers and jeans.



**Lily's** in Kirkburton  
**Sewing Basket**



For more information contact Susan:  
[sewing.lily@btinternet.com](mailto:sewing.lily@btinternet.com)  
07813 615224



friendly and flexible  
service at a  
reasonable price

## Lodge Vision

Available for essential public service broadcast TV reception and telecommunications including W-Fi.

Television Reception Systems Wi-Fi Coverage & data Systems



Camera Systems



Tel 01484 606688, 07961446572, Highburton, Huddersfield

Email: [info@lodgevision.co.uk](mailto:info@lodgevision.co.uk)



Lodge vision

[lodgevision.co.uk](http://lodgevision.co.uk)







Sally Byrne



It's so lovely to be able to share the musical successes of the young pianists and singers in our village. The ABRSM hosted their first face-to-face Summer exam sessions for 18 months, but musicians have been busy practising during this time and making fantastic progress.

Summer Exams congratulations to Evelyn McAvinue Grade 3 Piano – **Merit** and Alex Haigh Grade 2 Piano – **Merit** (Pictured above)



**Music Mentor** - Charlotte Reddiough Charlotte has been playing piano for many years and is about to sit her Grade 7. In order to go further than Grade 5, each pianist needs to sit a Grade 5 Theory exam.

Charlotte passed this exam a couple of years ago and I asked her if she would teach and prepare some of my younger students for Grade 5 Theory.

So, she became a music mentor and has been teaching a steady stream of young musicians ever since. She is a fantastic role model and I would like to celebrate her successes with the following results: Emily Winter Grade 5 Theory, and Harry Wood Grade 5 Theory (Pictured below)

Well done to Emily and Harry for their commitment to learning the theory of music and to Charlotte for doing such a an amazing job.



We wish the following students good luck as they prepare to take the following exams in November: Emily Davies piano Grade 1, Emma O'Donnell Piano Grade 5, Charlotte Reddiough Piano Grade 7, Martha Showell Nicholas Singing for Musical Theatre Grade 3.

All students will be learning carols in the run up to Christmas and sharing their musical masterpieces on Christmas Day with their families. I look forward to updating you further in the new year and thank you all for supporting and encouraging the young musicians in our villages.



Superb choice  
of cask ales

Quiz Night  
Tuesdays 9pm  
Free Supper

Food Served:  
Thurs 5pm - 9pm  
Fri 12 - 2.30...5.30 - 12 - 9pm  
Sat 12 - 2.30...5.30 - 9pm  
Sun 12 - 6pm



WHITE

SWAN

FOOD SERVED  
THURSDAY TO SUNDAY

123 PENISTONE ROAD KIRKBURTON

Christmas  
Menu  
2nd to 24th Dec

Sunday Roast  
Served 12 - 6pm

Tel 01484 609 707  
or message via  
Facebook page





## Martin Ward looks at cars on TV and in films

Every time you put on the telly or go to the cinema to watch a film, drama, soap or comedy, if it is set after the 1920's you can be pretty sure you will see a vehicle in it.

There are two ways they get onto our screens, the first are the older, classic cars that are generally difficult to source, and the film or TV company pay a fee to the owner to 'rent' these for a number of days or weeks. The drawback is your precious, and valuable old motor is left in the hands of completely unknowns. The advice I always give is try and stay with the vehicle at all times. The other way is called 'Placement'. This is where the manufacturer pays the TV or Film company to have their new cars appearing in dramas or soaps. They get much publicity from having their vehicles in many scenes and they think the amount they pay is good value.

I have done much supplying of vehicles over the years and have appeared on TV, although I am unrecognisable, as the make-up people dressed me up to look like the characters if they need a stand-in.

I have been dressed as Compo in *Last of the Summer Wine*, PC Penrose in *Rosie*, and Inspector Kate Langton in *Juliet Bravo*, the beauty of doing these 'extra's' parts, is not the additional money, no it's the fact you can use the catering truck and eat and drink tea all day.

You have to get the vehicle right for the character, which invariably means getting the scripts early. You can't have a 'poor' person job-hunting in a brand-new BMW, and you can't have a family with four kids and two dogs in a small four-seater hatch.

Some of the more observant of you might have noticed a lot of KIA Police cars in numerous TV and Films, mainly dramas. This is because KIA UK have let some cars out on long term loans to get their vehicles on as many productions as possible (Placement). To 'kit-out' a car in full Police livery costs around £1,000, so these cars cannot be changing regularly, it just wouldn't make financial sense.

The biggest problem with TV cars is when there is a



**Martin is the one on the right (after make-up)**



*A bit of straightening out and a polish it'll be as good as new*

real baddie, a character who is just shocking and awful, and they need a car. Getting any manufacturer to supply a car is impossible, so generally a hire car has to be rented, and try and be disguised as much as possible.

If a car is just to be used very briefly, or just in a couple of scenes, then quite often a member of the crew or cast offer the use of their car, for a small fee of course.

If at the start of a new series, one of the main characters, who is wealthy, has a good well paid job, is seen driving a fairly old battered car, then you can be pretty sure it is going to be involved in an accident, or driven off a cliff, or driven into a lake somewhere during the series.

In one of the *Last Tango in Halifax* episodes, Sarah Lancashire's JEEP was hit by another car. JEEP refused to have a damaged car returned to them, so a substitute car had to be found to have the rear end demolished.

But problems are always existing, if the main character's car gets bumped, or has technical issues, then it's normal to try and have an identical car nearby, a quick swop of number plates, and you're back in business.

It is a really interesting part of the motor industry, and a lot of work and thought goes into it; so the next time you put on the telly or go to the cinema, just give a little thought for those who supply the vehicles.



**A Kia Police car in Coronation Street**



# Village Sketch Book

Following on from a lovely day of drawing earlier in the summer, our little band of travelling sketchers met up again on 16 October for a second session, this time concentrating on the area around Northfield Lane in Highburton.

Some worked at the bottom of the lane and others gathered in the farm yard opposite the village hall. We were so lucky that the owner was happy for us to be there and showed us around the farmhouse and barn which he is restoring with original and reclaimed architectural features from around Yorkshire.

We worked and chatted for a couple of hours before all get-

ting together for a cuppa and a show and tell session. Everyone was happy with their work and agreed that this is a really pleasant way to spend a morning, just focusing on your art with like minded people and not a care in the world. We agreed to meet again every three months and settled on 8 January (or thereabouts, depending on the weather) for our next session which will be in Burton Dean.

Anybody is welcome to join us, it doesn't matter whether you are a competent sketcher or not, enthusiasm is much more important than ability, just



watch out for confirmation of the date on the Community Facebook

page or contact Linda Downs to be added to the mailing list.  
[lmdowns@hotmail.co.uk](mailto:lmdowns@hotmail.co.uk)

## German Bierkeller Party Nights

**Friday 3rd & 10th December, from 7.30pm**

Enjoy German style Bavarian music and sing alongs as The Venue transforms into a German Bierkeller for a night not to be missed! German beer, steins and fully stocked bar available

**£10 per person including bratwurst or pretzel**  
**Book tickets at [www.thevenuehuddersfield.co.uk](http://www.thevenuehuddersfield.co.uk)**

Perfect for work party nights. Fancy making a night of it? We have serviced apartments available

**THE VENUE**  
BAR & KITCHEN  
Storches Hall Park, Huddersfield, HD8 0WA

**FANCY DRESS ENCOURAGED!**

[f](https://www.facebook.com/thevenuebarkitchen) [@thevenuebarkitchen](https://www.instagram.com/thevenuebarkitchen)



## Kirkburton Kirkwood Shop



**Christmas at Kirkburton Church**

£3.99

We are Christmas— ready. Our shelves are fully stocked with Christmas new goods as well as donated items, so if you are wanting diaries, calendars, Christmas cards, decorations, gifts for him, her or the kids we have it.

This year “The Kirkwood” has some lovely Christmas card designs for sale and we do have a special one of “All Hallows Church, Kirkburton.” To make sure you get yours, pop into your local shop as soon as possible.

With diaries in mind, Sandra and Christine are running a Kirkwood stall at the “Foxglove Xmas Fayre” on 4 December from 11am until 4pm. We have been told that the stall will be crammed

with goodies, so why not pop down and see what bargains you can bag.

### Our Christmas Opening Hours

24 December - 9am- 4pm

25-28 December - Closed

29 December - 9am- 5pm

### Our New Year Opening Hours

31 December - 9am- 4pm

1 and 2 January - Closed

3 January - 9am- 5pm

### Kirkburton Shop's wish list

Our very special shop, visited regularly by people from our own and nearby villages is desperately in need of additional volunteers.

Help is needed especially on the following days:

Saturday – all day - two sessions: 9am – 1pm or 1pm – 5pm

Monday morning 9am – 1pm

Wednesday morning 9am – 1pm

Thursday afternoon 1pm – 5pm

Friday afternoon 1pm – 5pm

There are a variety of jobs on offer and full training and support will be given

**THE  
KIRKWOOD  
SUPPORT  
LIFE**

to develop the skills of any interested volunteers of any age.

If you think you can help we would be delighted to hear from you.

**Round  
House** PODIATRY

Professional  
Foot Health  
Care

### Treatment for all aspects of foot care, including:

- Athlete's Foot and Fungal Nail Infections
- Verrucae • Foot Pain • Nail and Skin Care
- Chilblains • Ingrowing Toenails
- Medical Pedicures

**To book an appointment,  
tel: 01484 607615**

1 Shelley Ln, Kirkburton,  
Huddersfield HD8 0SJ  
roundhousepodiatry.com

### Friday Friendship Cafe

Support and Information in a safe & relaxed environment for people with Memory Loss, Carers, Ex Carers & Bereaved.  
**All Welcome**



Drop in anytime between 2pm - 4pm  
Every 1st & 3rd Friday of the month

**Shelley Village Hall  
In The Main Hall**

**Dont Be Shy, Give Us A Try**

Contact: Jill - 07804 417 271 / Alison - 07969 579 230

*“Just what I need, a normal chat to help me through the dark days of my circumstances, it's a good respite for me”*

*“It's like coming into a cafe, but I can just chat away about anything and people listen to me and the cakes are delicious”*

*“We love to drop in, my partner can remember the faces and some of the games, whilst I can relax and chat with people who are in a similar situation”*

For those of you who have not been to the cafe, please be assured that you will receive a warm and friendly welcome from everyone.

Sometimes meeting up with friends, old or new, can make a huge difference.

If you live alone or are caring for someone, experiencing memory problems or you are bereaved, we are here, to listen to you, to laugh or cry with you, to support you and offer you friendship.



# Burton Belles WI

## from Llanfair to the Burtons



This September celebrated the 106<sup>th</sup> anniversary of the Women's Institute in Britain. Madge Watt, a founder member of the WI in British Columbia organised the very first meeting in Great Britain in 1915. This was held in none other than Llanfair-pwllgwyngyllgogerychwyrndrobwlantysiliogogogoch in Anglesey, Wales, hope you had your teeth in for that one. Two years later and the National Federation of WIs was formed and was led mostly by women involved in the suffragette movement. Their first resolution was passed in 1918 and from that initial meeting there are now over 700 WI groups in the UK, with names ranging

from Tea and Tarts to the Rolling Scones.

Each WI is different with some being much more traditional than others. But one thing that does remain the same regardless, is the sole purpose as to why this institute was formed in the first place, and that is the idea of establishing a strong female community as well as providing women with educational possibilities and to help make a change in their local communities.

Throughout the Second World War WIs assisted in helping settle evacuees in the more rural areas as well as collecting over 500 tons of rosehips so pharmacists could produce rosehip syr-

up which was high in vitamin C and preserving over 1,600 tons of fruit by making jam. I finally got round to making my very first batch of jam this summer, I'm not sure it would have won any prizes, but I feel I am now a proper WI member after adding this culinary achievement to my bow.

Burton Belles WI is still a relatively new group and although we may veer more towards the modern ways of doing things, we still encompass some of the traditional ways especially when it comes to providing cake at meetings. We are finally back to doing face to face meetings at Burton Village Hall and we're so happy to be able to welcome existing as well as new members. We all turned detective for October's meeting as Think Forensic came and gave a hands-on interactive talk, so we're now super sleuths thanks to that exciting and informative meeting. November's meeting is sure to be a hit as we host Linda Hewitt again for an evening of baking ready for Christmas and if you feel like putting your new found baking tips to the

test you could bring something along to the December Christmas fuddle.

Although in the long line of WIs, Burton Belles is still to make its mark, we are part of a long succession of amazing women who have created change and improved the way of life for many through various resolution campaigns and selfless acts. Hopefully we too can celebrate our 100<sup>th</sup> birthday like Upton WI did a few years ago. Although I won't be there to rejoice, it's nice knowing that I am a founding member of this wonderful group, that I'm sure will continue to grow and contribute to the local community.

**Sarah Sharp-Allison**

**President of the Burton Belles WI**

Image from <https://www.iwm.org.uk/history/what-did-the-womens-institute-do-during-the-second-world-war>

<https://thinkforensic.co.uk/for-individuals/adult-experience-days/ultimateexperience/>



### BEAUTY WITH A CONSCIENCE

*In an industry that often overlooks animal welfare and the environment, we promise never to test on animals, nor use derivatives that cause them distress. That's why we stand with Cruelty Free International, The Vegan*

*Society and PETA as a 100% cruelty-free brand, now and always. Discover our multi award-winning range of skincare and beauty, **freshly made in the UK** using the most innovative, effective ingredients that nature has to offer.*

**Tropic** are the fastest growing skincare company in the UK offering multi award winning products.

Contact me for bespoke gift hampers or find a fabulous range of celebration gifts by browsing my online shop.

[www.tropicskincare.com/nicolaeastwood](http://www.tropicskincare.com/nicolaeastwood)

For a brochure or a free, no obligation, 1-1 consultation contact me ...  
phone or text 07802 760965 or email [nicola8214@icloud.com](mailto:nicola8214@icloud.com)





## Burton Crafters



The group have been meeting face to face for a few weeks now and enjoying crafting together.

Nothing much was done at the first meeting apart from catching up on news, how we were and how we have coped with the pandemic. It really is amazing how productive the lock-down was and how much has been made to help people during these difficult times.

Enforced time at home during lock-down has meant that many people have taken up crafting so we have welcomed a few new members,

hoping to pick up a new interest or a long forgotten one. All welcome.

In meetings since our re-start, we have made paper flowers, silk painting, card-making, a toilet bag and lavender dolls amongst all the other articles that are always on the go – patchwork, octopuses for premature babies and others.

Of course, there is our latest long-term project – poppies to commemorate Armistice Day in the Remembrance garden in Kirkburton – flowers and wreaths, which you will see in the garden.

## HD8 Voices Choir



When the email arrived to say that the choir was starting again, there was excitement and delight from choir members. Liz and Sally were very anxious to point out that they were going to ensure safety for everyone, going along with the guidelines from their association, and making sure that everyone felt comfortable. Payment methods, ventilation, seating arrangements and papers were all taken into account. Those first emails were also clear to point out that members must make their own decisions about returning, and not feel pressured, but decide for themselves about feeling confident to return.

Liz started the first session with very gentle exercises on breathing and the vocal cords, which, after all had hardly been used for singing for 18 months. We went

through several songs and the sound produced, considering, was surprisingly good. I think it safe to say that everyone enjoyed the session, and from the looks exchanged between Liz and Sally, they were quite pleased with how we performed.

In order that social distancing is observed, Liz sends out details of the songs we may be singing so that nobody needs to share, and after a couple of weeks, a Christmas song appeared for members to download – is this a sign that a seasonal celebration is on the cards – watch this space.

I am sure that the choir would like to thank Liz and Sally for the amount of work they have put in to ensure a coronavirus-free return to choir, and to hope that we continue to be safe.

### *The Bakery & Coffee Shop*

81a North Road, Kirkburton, Huddersfield, HD8 0RL  
P. Newsome & Son  
Tel./Fax: 01484 602413

Handcrafted Breads & Confectionery produced daily  
by a team of craft bakers

Visit our Coffee Shop serving Full English Breakfasts,  
Light Snacks and Speciality Coffees

Quality & Freshness

### Beaconsfield Gallery



Open ONLINE  
or by appointment

- Over 200 original paintings.
- Local Landscapes, Castle Hill, Emley Mast etc, canal scenes, seascapes, equestrian etc.
- Limited Edition Prints of all originals.

15 Paul Lane, Flockton Moor, Wakefield  
Tel: 01924 840687

Email: [info@beaconsfieldgallery.co.uk](mailto:info@beaconsfieldgallery.co.uk)

Web: [www.beaconsfieldgallery.co.uk](http://www.beaconsfieldgallery.co.uk)

The website has examples of all the paintings and prints available



# Time Together

## (the Denby Dale Centre)

**TIMEtogether**  
connecting people



## Denby Dale Scarecrow Festival

In September the Denby Dale Lions Club ran a fantastic Scarecrow festival in and around local villages. The theme was key workers and the winner was Postman Pat. A week after the event, the Lions Club members decided to donate £3,000 of the money raised to the Denby Dale Centre, in recognition of their recent and present work in the local community.



The Chief Officer of the Denby Dale Centre, Paul Jones MBE said "...my jaw dropped to my chest when the Lions Club contacted me to inform of their decision. It is amazing just how strong our local community is, and how much the charities and community groups look after each other".

The Denby Dale Centre is presently operating over 30 projects to help to connect people and we would like £2,000 of this donation to be ringfenced to continue the great work of the local Community Pantry. The pantry is the continuation of our Covid Response Emergency and General Food Fund where, instead of setting up a Food Bank, we gave local families vouchers to support their grocery shopping. The remaining donation will be used to help maintain our fleet of accessible minibuses, which, before the pandemic, were being used by over 80 local groups.



On a bright sunny day in Denby Dale, the Lions met with DDC to present the Scarecrow cheque, proving that Scarecrows can connect people.



Lion Charlie Coupe, Lions Secretary Vince Hayes, and David Absolon, President of the Denby Dale & District Lions Club presents Chief Officer Paul Jones MBE, Transport Coordinator Lorraine Holtom and Driver Peter Southwell of the Denby Dale Centre, with the cheque.

TIMEtogether presents:

## CREAM TEAS

Thursday in Denby Dale

Friday in Kirkburton

2-4pm

£2



Connect with us and others  
with scone & jam, a drink & chat,  
and we can help you connect  
to other groups too!

Thursday 2 - 4pm 12b Springfield Mill, Denby Dale  
Friday 2 - 4pm Kirkburton Hub, Kirkburton  
Further info on 01484 860077 and [www.ddc.org.uk/creamteas](http://www.ddc.org.uk/creamteas)

Suite 5, Westleigh House, Denby Dale, HD8 8QJ  
01484 860077  
[hello@ddc.org.uk](mailto:hello@ddc.org.uk) [www.ddc.org.uk](http://www.ddc.org.uk)  
Facebook @DDCprojects  
Twitter @TimeTogether1  
Charity 1118128 Company 5507412  
Registered in England, Ltd by guarantee  
TIMEtogether is powered by the Denby Dale Centre





# Sports reports



The days are getting shorter and the nights are drawing in. But, at Gregory Fields, we are still playing tennis.

So, why not come along and join us?

**And take advantage of our Winter Season Membership Fees.**

**From 1 November 2021 to 31 March 2022 –**

Membership costs only £40 for Adults and £25 for Young Persons (16 – 25)

Full details are available on our website at [club-spark.lta.org.uk/GregoryFieldsTennisClub](http://club-spark.lta.org.uk/GregoryFieldsTennisClub).

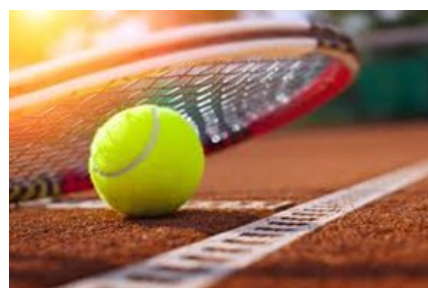
Alternatively, the courts are available to hire at a cost of £10 a court.

We are a small and friendly club at the heart of Highburton / Kirkburton and we would be absolutely thrilled to see you on the courts, whatever your age or ability. The club has three all-weather tarmac courts with floodlights, which makes it possible to play all year round.

If you are interested in playing competitively, we have two ladies' teams and two men's teams who train on Monday and Tuesday evenings respectively.

If you prefer to play socially, we hold club sessions on Thursday evenings from 6:00pm and on Friday mornings from 10am. These sessions are a great opportunity for members to come along, meet other players, mix in.

So, whether you are an absolute beginner, someone returning to the game after a break or an experienced player – **GET IN TOUCH NOW.**



## Kirkburton Football Club

**Kirkburton AFC** have started the season very well in their respective division two leagues, (both teams getting promotion this season 2021/22) with the first team currently 5<sup>th</sup> in the league, having lost only one game out of seven, drawing three and winning three. The current first team manager Mikey Vickerman is upbeat about the current squad we have, and believes that they could be challenging for promotion at the end of the season. Top Scorer for the first team so far is Jack Goring with eight goals in seven appearances.

We are through to the 2<sup>nd</sup> round of the Sheffield cup after beating FC Doncaster 5-1 away. Our next opponents are Athersley Rec away. The next league fixture is Kirkheaton away.

The reserves team managed by Jack Wimpenny are also doing very well, currently top of the table

having played eight games and only losing one. They play Berry Brow A team in the cup for their next fixture, always a tough game with them, they are currently top of div 3 reserves league. Top scorer so far for the reserves is a rejuvenated Jay Calcutt. The son of ex-first team Manager Dean Calcutt and close behind is Joe Lockwood son of ex-chairman Mick Lockwood. The next league fixture for the reserves is Scholes at home.

For all our fixtures please see <https://fulltime.thefa.com/index.html?selectedSeason=705428162&selectedFixtureGroupAgeGroup=0&selectedDivision=109038164&selectedCompetition=0>

**We are still trying to raise funds for our barrier around the football field which got vandalized recently, we have a go-fund page if anybody would like to donate. <https://gofund.me/f4137b81>**

Kind regards

**Bomber**

### First team table

Pos	Team	P	W	D	L	GD	PTS
1	Britannia Sports First	7	5	1	1	13	16
2	Dalton Dynamos Firsts	7	5	0	2	5	15
3	Lepton Highlanders H&D Team	7	4	1	2	7	13
4	Kirkheaton Rovers First	7	4	0	3	11	12
5	Kirkburton First	7	3	3	1	7	12
6	Cumberworth First	6	3	2	1	2	11

### Reserves table

Pos	Team	P	W	D	L	GD	PTS
1	Kirkburton Reserves	8	5	2	1	10	17
2	Meltham Athletic Reserves	8	4	3	1	4	15
3	Cumberworth Reserves	6	4	0	2	25	12

**THORNCLIFFE WORKING MENS CLUB**

*A friendly welcome awaits you at the little club in the heart of the countryside.*



*With a recently renovated interior, large club field, children's play area and secluded garden it is the perfect place to relax with the whole family. Now selling real ale.*

*Find us and like us on Facebook for opening hours, events and club news.*

*In this Covid era check our facebook page for up-to-date opening times*



# Kirkburton Cricket Club



**Roscoe Thattil receives his award**

At the point in writing the season has now finished and we look forward to winter nets and planning for the 2022 campaign. Looking back on the 2021 season we consider it a great success both on and off the field. The first team finishing 4<sup>th</sup> in the Drake's Premiership is our highest league position for several years.

Club professional Roscoe Thattil, who has now returned to Sri Lanka, was

again a huge success and clearly played his part. He produced some fabulous performances throughout the season including 163 not out against Broad Oak in July, the season's biggest individual innings by any player. His performances during the season resulted in him being awarded the Leagues Overseas Player of the Season award for 2021. To prove he was as consistent as his first visit in 2019 he scored over 1,000

runs. He racked up five fifties and three hundred's becoming a key contributor to the club's success.

Alongside Roscoe another star performer was John Keeling, signed from Broad Oak for the 2020 season that was curtailed due to Covid. Returning this year, we hoped John would have a big impact with his off spin and that was certainly the case. Consistent throughout the season with a number of five wicket hauls he finished with 58 wickets at 12.06, to win the league bowling prize.

With one of the youngest squads in the league we feel next season should be equally if not more positive with the likes of Jack Byrne, Sam Carroll, Ben Carrington and Aaron Moore all juniors of the club gaining more experience.

The second eleven will again play Premiership cricket next season after a development year in 2021. With four or five of the



club's juniors playing their first years of senior cricket the experience will have done them good and benefit them for next season.

The club is very proud to say, yet again, we had a side in every age group of the Huddersfield junior competition. The teams consistently perform which is testament to the coaching they receive. We are always grateful to the volunteers that give up their time so willingly.

Off the field the club has again made positive steps in the right direction. We have plans to develop the permanent nets during the winter to improve the quality of practice for all members. The nets behind the scoreboard have certainly done a great job having been erected in the 1990s but with better quality facilities now available we feel we want to invest in the club's future.

We wish the community and especially our members a great winter and look forward to seeing you all in 2022 for what we hope will be a great season.

Best wishes,

**Kirkburton Cricket Club**

## Kirkburton Carlton Working Men's Club, School Hill

SPORTS ROOM  
WITH POOL  
TABLES AND  
DART BOARD

NEWLY  
REFURBISHED

SHOWING  
SKY  
SPORTS

FREE TO HIRE  
FUNCTION  
ROOM



Like us on Facebook 'Kirkburton Carlton Club'



## Eating Out with The Burton Diner

# The Old Post Office

**Yorkshire Restaurant and Grill**

**600, Huddersfield Road**

**Haigh, Barnsley S75 4DE**

**01226 387619**

**theoldpostofficebarnsley.co.uk**



The Old Post Office might have a Barnsley address, but it isn't that far away. It's just past the entrance to the Yorkshire Sculpture Park at West Bretton and near to Junction 38 on the M1. It looks like a large old Victorian house.

The building is all very newly refurbished now and with ample parking. It used to be a thriving pub but is now rebranded as a restaurant and grill with steak as a speciality. It has several large rooms and hosts various functions throughout the year.

The ethos of the Old Post Office is a pride in its Yorkshire roots and a passion for high quality, with locally-sourced food from farmers and suppliers who have the best that Yorkshire has to offer with an emphasis

on supporting small producers.

I went along with a friend for a light lunch, we had booked as it is advised. We were warmly greeted and shown to our table in a beautifully clean and newly-decorated room.

There was an extensive menu: starters were mostly around £7 - main courses between £13-19 - the Yorkshire grill from £16 and upwards offering pork, the famous Barnsley chop, of course, some chicken but mostly a range of steaks - Burgers were all £14 each - side dishes ranged from £2-4 - light bites mostly sandwiches and salads were between £7 - £10, but these are only offered between 12:00- 4:00pm each day.



A children's menu is available too which offers mains and desserts from £3 - £4. Finally, there is a daily specials board and a Sunday lunch menu with prices at £14 for one course, £19 for two and three for £24. Vegetarian and gluten-free options are available, and of course a pretty extensive drinks list.

My friend and I were just having a light lunch, she chose something from the specials board, a large bowl of chicken wings in a tangy barbecue sauce that she said was absolutely delicious and she only left a small pile of bones licked completely clean. I decided on the chicken and bacon club sandwich which came in a ciabatta roll and was served with salad and a bowl of root vegetable crisps.

It was an extremely generous sandwich and very good. We both only had soft drinks as we were driving, and on this occasion didn't succumb to a dessert as we were completely full. It was a very pleasant lunch and definitely worth visiting again.

Opening hours are:

Monday to Thursday 12:00 noon - food service until 8:30pm, closing at 11:00pm

Friday to Saturday 12:00 noon - food service until 8:45pm, closing at 12:00am

Sunday 12:00 - food service until 5:00pm, closing at 8:0pm

It is advisable to book.

Gift vouchers are also available





## BB Book Review

### A Man Called Ove

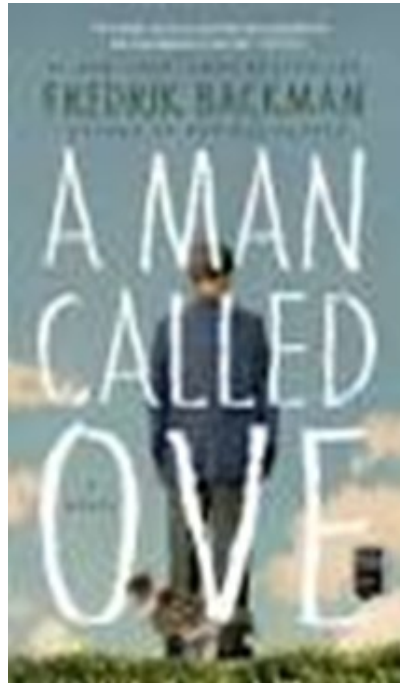
by Fredrik Backman

Most people have someone like Ove in their lives. A grumpy, miserable git. Someone who constantly has a chip on their shoulder and takes it out on everyone they run into. But after reading 'A Man Called Ove', you will undoubtedly reassess these people, and might be encouraged by what you discover. These people might seem bitter and ill-spirited, but more times than not, you'll find that there is a soft, tender centre to be unearthed.

Originally written in Swedish in 2012 before being published in English two years later, 'A Man Called Ove' was the first foray into the literary realm for Fredrik Backman, who also writes for two Swedish magazines. Backman's inspiration for the novel came from an article about a man, indeed called Ove, who had a tantrum while buying tickets at a museum. This prompted Backman to start a blog, where he vented about the things that grinded his gears.

The book centres on a newly retired gentleman named Ove, who Backman quickly establishes as an impatient, crabby pensioner who places a premium on the traditional values of hard work and honesty, and who despises the new-fangled methods of the modern age. He has very few friends left in his neighbourhood – the same one he has lived in all his life – which has become more populated and built-up, much to his dismay. After being laid off from his job on the railway tracks, where he worked since his youth, Ove determines that life is simply not worth living, and seeks in various ways to end it, to be with his late wife.

His plans are continuously and hilariously foiled, however, when a young couple and their infant children move in next door. He considers them – like most



people he meets – to be hopeless and annoying, after the young man ruins his 'vegetable patch' thanks to his rubbish driving. But in spite of Ove's efforts to deter his young neighbours from bothering him, they keep coming back! Suddenly, Ove finds himself performing favour after favour, and the new neighbours discover that despite his hostile demeanour, there is something deep down inside Ove that is loving and kind. His dealings with the neighbours ultimately lead various other people, as well as a stray cat, into his life, where his unorthodox brand of generosity wins him relationships he never expected – or even wanted – to have. Although he would never admit it, Ove ends up quite contented with all this newfound company. Along the way, he is introduced into the 21<sup>st</sup> century, with all of its hybrid cars and computers that aren't really computers, making for some highly comedic moments.

The book was a huge success for Backman, who has since published six further works. Following its great reception, 'A Man Called Ove' was also adapted to the silver screen in 2015.

The Burton Bookworm

## Recipe for November

### Chocolate, rum and raisin fudge



#### Ingredients

500g 70% dark chocolate  
175g white chocolate  
50g butter  
350g icing sugar  
100g raisins  
350g chopped hazelnuts  
30ml rum (or to taste)

#### Method

Butter a 20cm square baking tin.

Melt the dark and white chocolate in microwave in 30 second bursts until each are completely melted.

Combine the melted chocolate, add butter.

Stir in the icing sugar, nuts, raisins and rum, mix until smooth.

Place mixture in the prepared tin and lay a sheet of cling film over the top; press and smooth down.

After 30 minutes score with a knife to portion (bite size).

Leave in the tin to set for two hours in a cool place.

Portion out and dip into tempered dark chocolate and decorate (optional).

Serves 14

Preparation time: 40 minutes

Dietary: contains eggs, vegetarian



visit [www.kirkburtonautocraft.co.uk](http://www.kirkburtonautocraft.co.uk)

**Springfield Lane**  
**Kirkburton**  
**Huddersfield**  
**HD8 0NZ**

**ALL WORK GUARANTEED**

- ★ Quality Bodywork
- ★ Insurance Repairs
- ★ Free Estimates
- ★ End of Lease Refurb
- ★ Classic Car Restoration

**Recovery and courtesy car available**

**Support your local businesses**

**Call for a quote now:**

**01484 607103 mob.: 07867 382958**





Burton Village Hall  
Northfield Lane  
Highburton  
Huddersfield  
HD8 0QT

[www.highburtonplaygroup.com](http://www.highburtonplaygroup.com)  
[admin@highburtonplaygroup.com](mailto:admin@highburtonplaygroup.com)

We are a community-run Playgroup offering a wide range of activities and excellent facilities, including a large outside play area with sensory garden. We aim to provide a high standard of childcare, in a welcoming, friendly, comfortable environment, where learning is achieved through play. All our staff are well-qualified and have a wealth of experience in working with children. We are very proud to have been rated "OUTSTANDING" by Ofsted since 2008.

We're a Registered  
**30 Hours**  
Provider

**We are open during term-time the following hours:**

9am-3pm on Monday, Wednesday, Thursday\*, Friday

9am-12:30pm on Tuesday

We also provide a lunch club facility

(\*Note, Thursday 12:30-3pm is Rising 5's for Pre-Schoolers only)



The children have been really enjoying baking gingerbread men and eating them too! The children helped weigh out all the ingredients and mix them together and decorated their baked goodies ready to enjoy.

We can offer funded places for 3 & 4 year olds for most of the week during term time. If you are eligible for 30 hours we can offer a place for up to 27.5 hours a week or you can use part of the funding with us and part with another childcare provider. You can check if you are eligible for 30 hours funding using the childcare choices website. All 3 & 4 year olds are eligible for 15 hours funding; these can all be used with us and any additional hours required can be paid for.

Childcare  
**Choices**

Supporting families  
with childcare costs

[childcarechoices.gov.uk](http://childcarechoices.gov.uk)



HM Government





# ICE VALLEY

made in Kirkburton

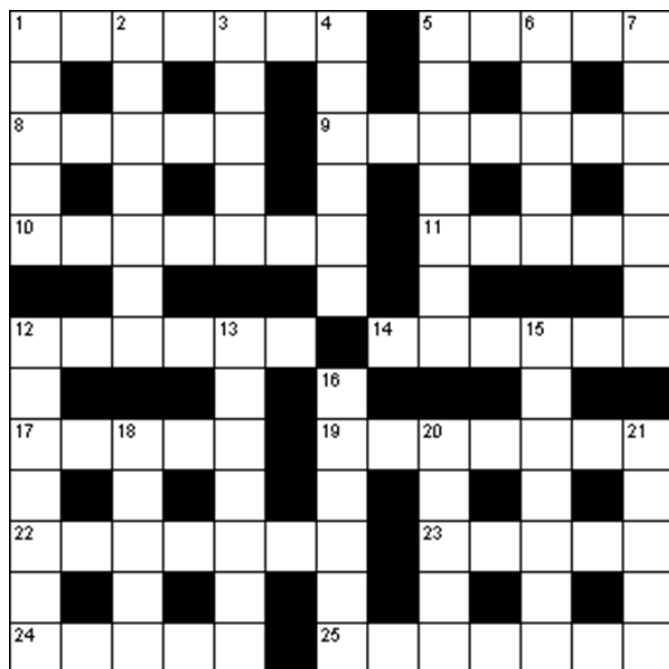


OFFICIAL PARTNER  
2020/21





# PUZZLE PAGE



## Across

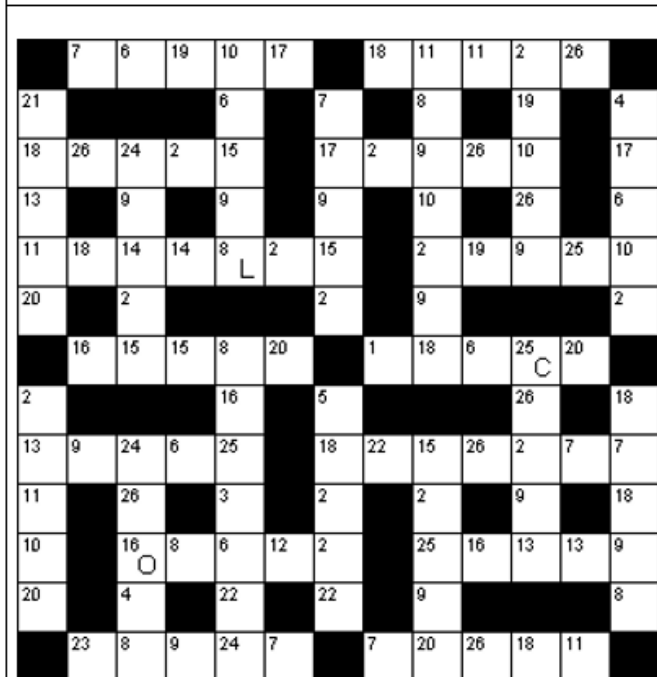
1. Gallantry (7)
5. Subsequently (5)
8. Extreme happiness (5)
9. Considered unlikely (7)
10. Pills (7)
11. Paragon (5)
12. Gaped (6)
14. Concur (6)
17. Proverb (5)
19. Recite (7)
22. Feed (7)
23. Water lily (5)
24. Frock (5)
25. Use again after processing (7)

## Down

1. Established custom (5)
2. Arc of refracted light (7)
3. Publish (5)
4. Humble (6)
5. Risible (7)
6. Heading (5)
7. Conundrums (7)
12. Hankered (7)
13. Foes (7)
15. Flexible (7)
16. Fix firmly (6)
18. Angle less than 90 degrees (5)
20. Something that has survived the past (5)
21. Follow (5)

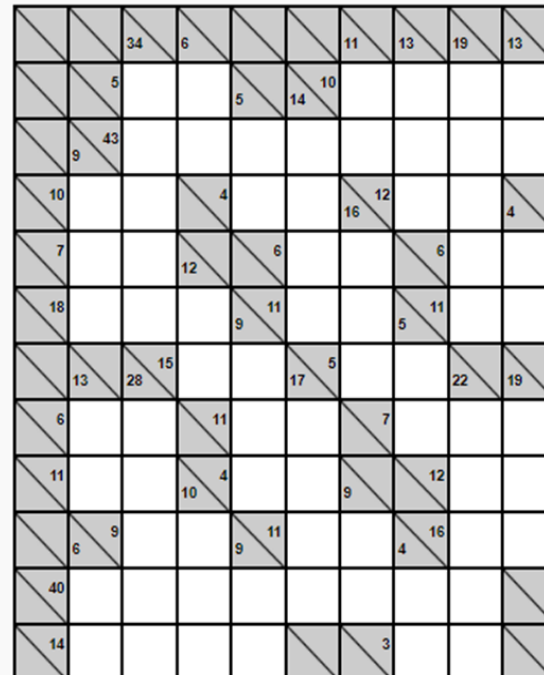
## CODEWORD

Each letter in this puzzle is represented by a number 1-26. Can you crack the code and solve the crossword? Every letter of the alphabet is used at least once. 3 letters are already in place to get you started.



A		N	
B		O	16
C	25	P	
D		Q	
E		R	
F		S	
G		T	
H		U	
I		V	
J		W	
K		X	
L	8	Y	
M		Z	

1	2	3	4	5	6	7	8	9	10	11	12	13
							L					
14	15	16	17	18	19	20	21	22	23	24	25	26
		O									C	



## KAKUKO

Sometimes called the numerical equivalent of a crossword.

Fill in the squares using numbers 1-9 without repeating any of the numbers in a vertical or horizontal line.

## FOOD & DRINK WORD SEARCH

Find the hidden words (Listed below)? They may be horizontal, vertical or diagonal, forwards or backwards.



APPLE, APRICOT, BANANA, BEANS, BEEF, BEER, BREAD, BUTTER, CABBAGE, CAKE, CANDY, CARROT, CEREAL, CHEESE, CHICKEN, CHOCOLATE, COFFEE, COOKIE, CREAM, EGGS, FISH, JUICE, LEMON, LETTUCE, MARMALADE, MELON, MILK, MUSHROOM, ONION, ORANGE, PASTA, PEACH, PEAR, PEAS, PICKLE, PINEAPPLE, POTATO, PRESERVE, RICE, SODA, SOUP, SPINACH, STEW, SUGAR, SYRUP, TOMATO, TREACLE, TURKEY, WATER, WINE.

## BULLETAGRAM

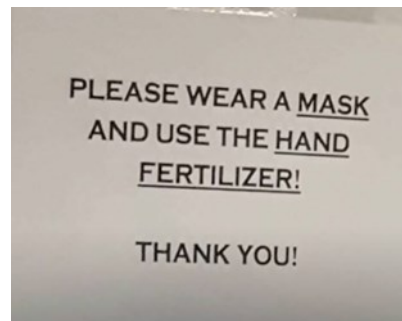
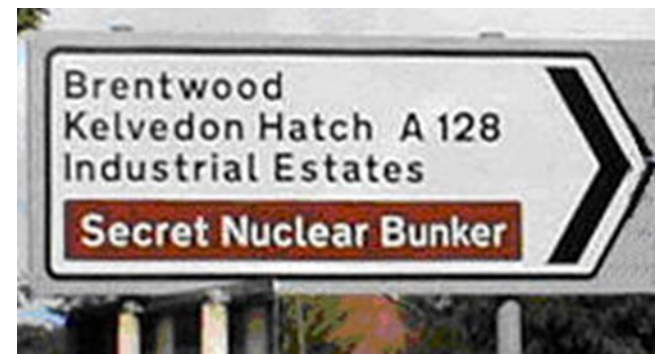
an anagram of a 9 letter word.  
The challenge is to solve the anagram and find as many words of 4 letters or more which contain the central letter

THE TARGET .. Not Bad 22,  
Better 26, Pretty Good 30,  
Champion Quality 34

T	R	O
Y	R	E
T	R	I



# JUST FOR FUN



## BUGGELETIN

**Buggeletin** is a word game to play alone or with others. The object is to make as many words as possible from the array of letters. The rule is that EVERY LETTER IN THE WORD MUST BE IN AN ADJACENT SQUARE TO THE PREVIOUS LETTER. You can move up down, left right diagonally as in 'REMOVING' example

P	V	O	A
I	N	M	O
R	E	G	A
S	N	R	C

### Make your own rules

- Allow 2 letter words, allow plurals?
- Allow slang, allow regional words, allow acronyms?
- Extra points for 5, 6, 7 letter words
- Time limits
- Handicaps ... younger players can have 2 or more letter words, older ones 3 or more letter words, older still only 4 letter words or more
- Every word gets a point plus extra for length
- If you are playing with others ... extra point if you have a word that no one else has.

D	F	R	E
B	G	S	A
C	I	I	A
M	D	N	E

We think there are least 41 words of 4 letters or more in this and 29 3 letter words

R	Y	W	E
S	O	C	E
L	A	H	M
S	H	P	X

We think there are least 53 words of 4 letters or more in this and 31 3 letter words



## How do I get in touch with ..?

### TRANSPORT

National Rail Enquiries 08457 484950  
 Metro Bus/Metro Train 01132 457676  
 Manchester Airport 0161 4893000  
 Leeds Bradford Airport 0113 2509696

### SCHOOLS

Highburton First School 01484 222730  
 Kirkburton First 01484 222734  
 Kirkburton Middle 01484 222737 or 604618  
 Shelley College 01484 868777

### KIRKLEES METROPOLITAN COUNCIL

Main Switchboard 01484 221000  
 web site [www.kirklees.gov.uk](http://www.kirklees.gov.uk)

### KIRKBURTON PARISH COUNCIL

Burton Village Hall 01484 604391  
 email [clerk@kbpc.co.uk](mailto:clerk@kbpc.co.uk)  
 web site <http://www.kbpc.co.uk>  
 Parish Council Office Opening Hours: Mon & Thurs 9.30 am to 1.30 pm.

### POLICE

In an emergency always dial 999  
 For non-emergencies 101  
 email [rural@westyorkshire.pnn.police.uk](mailto:rural@westyorkshire.pnn.police.uk)

### HEALTH

**Suspect Coronavirus** ring NHS 111  
 Kirkburton Health Centre 01484 602040  
 NHS Non-Emergency 111  
 Hudds Royal Infirmary 01484 342000  
 Holme Valley Hospital [01484 690342](http://www.hv.hx.nhs.uk)  
 Calderdale Hospital 01422 357171  
 Barnsley General Hosp 01226 730000  
 Kirkburton Dentist 01484 605812  
 Rowlands Pharmacy 01484 602991

### ELECTED REPRESENTATIVES

#### Parish Councillors

Derek Hardcastle 07779 628147  
 David Knight 07815 977021  
 Peter Taylor 07969 052736

#### Kirklees Councillors

Bill Armer 01484 314314  
 Richard Smith 07973 978369  
 John Taylor 07831 810096

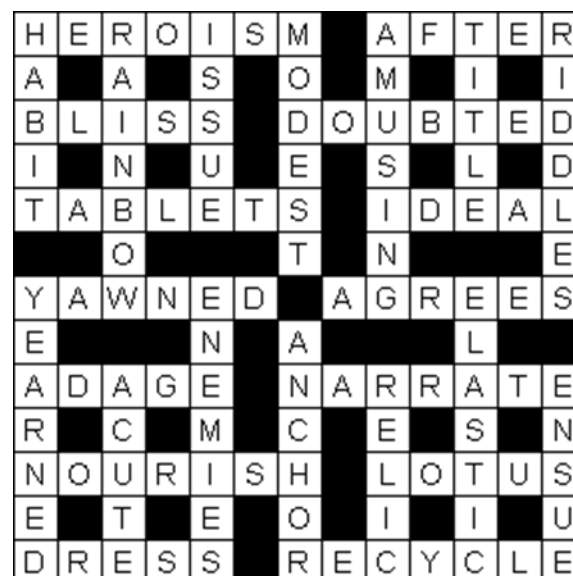
#### Member of Parliament

Mark Eastwood MP 01924 939007  
[mark.eastwood.mp@parliament.uk](mailto:mark.eastwood.mp@parliament.uk)

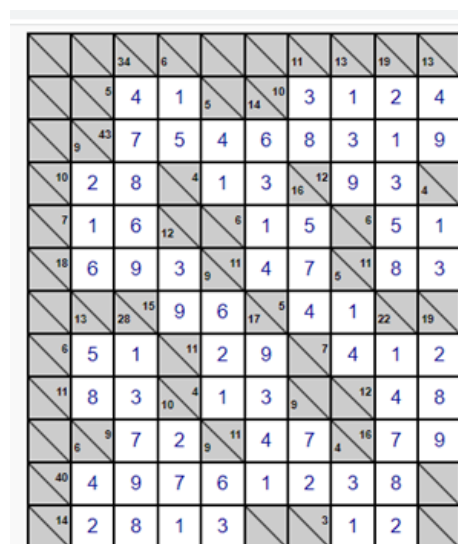
*Don't forget, the dead-  
 line for the next edition  
 of the Bulletin is Friday  
 14 January 2022.*

## Solutions

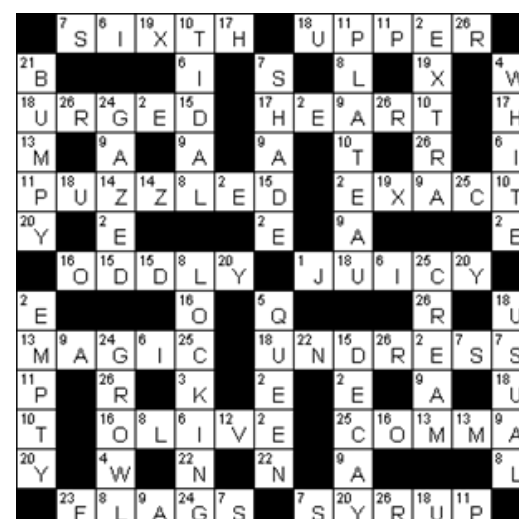
### CROSSWORD



### KAKURO



### CODEWORD



### BULLETAGRAM

WE GOT: territory terroir orrery retort rioter rotter terror tortie triter er-  
 ror otter retro retry rotte terry tetri titer titre torte toter toyer trier trite iter  
 riot rite rote roti tier tire tiro tore torr tort tory trey trio trot trox tyre tyro  
 yore